

Terrebonne Parish

Total Population by Evacuation Phase

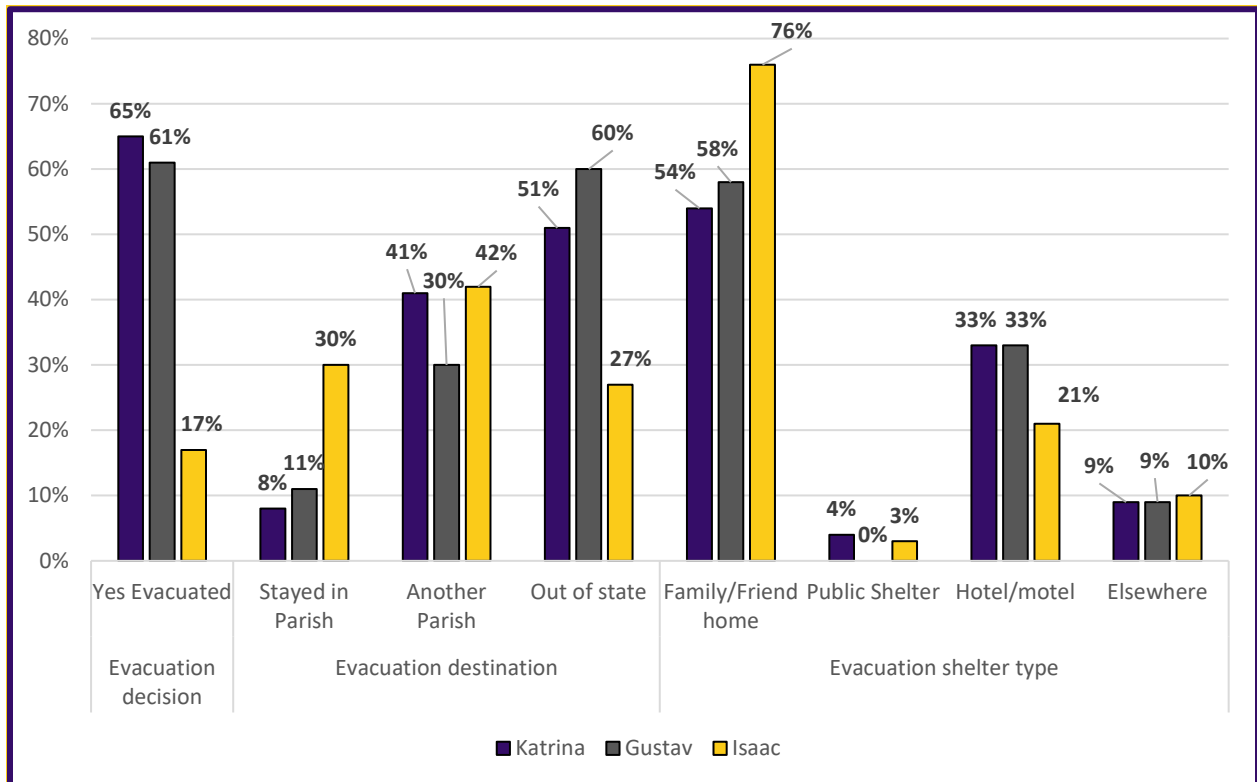
Parish	Phase 1 Evacuation	Phase 2 Evacuation	Phase 3 Evacuation	Total Population
Terrebonne	44,643	68,099	N/A	112,742
	40%	60%		

Total population by Evacuation Phase in Terrebonne Parish

Previous Evacuation Behavior

Survey Question	Previous Disaster Experience in Current Home	
During the time you've lived in this home, have any of the following hazards affected you, your home or the people who live with you?	Flooding from rain	13%
	Flooding from river, canal, or lake	9%
	Flooding from storm surge or wave action	9%
	Any type of flooding	22%
	Wind damage	47%
	No previous damage at current home	48%

Previous experience with flooding and wind damage in current homes.

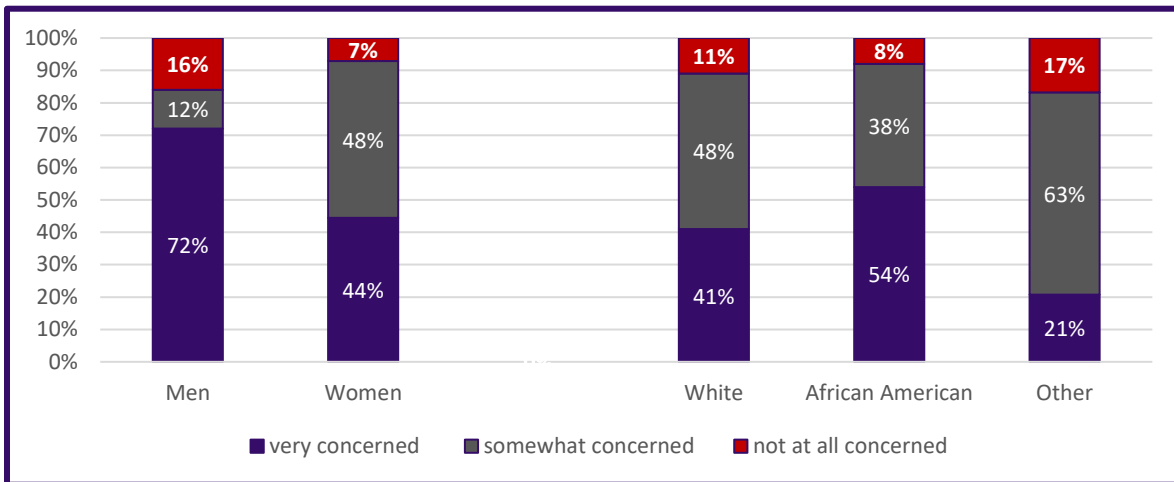


Evacuation decisions, destination, and shelter type during Hurricanes Katrina, Gustav and Isaac.

Behavioral Analysis Summary for Terrebonne Parish During Hurricane Events

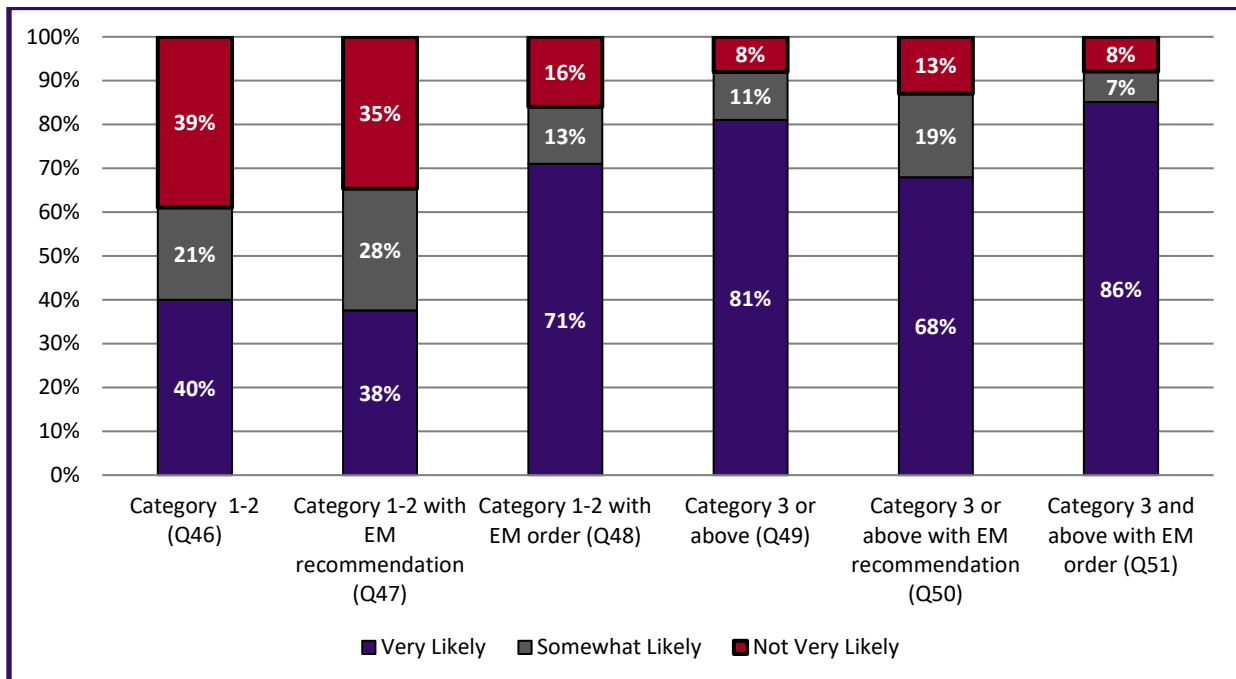
Risk perception of hurricanes and their effects.

Threat	Very Concerned	Somewhat Concerned	Not at all Concerned
Threat of Hurricane	41%	48%	11%
Flooding of Home	14%	39%	47%
Damage from Winds	30%	52%	18%



The variation in perceived threat of a hurricane impacting people varies among demographic data.

Evacuation Intentions



Behavioral Analysis Summary for Terrebonne Parish During Hurricane Events

Overall evacuation intentions for Terrebonne Parish

Most likely destination for if Evacuation for a Category 3 or Greater					
Category	Family/Friend	Public shelter	Hotel/Motel	Someplace else	Don't know
Overall by Percentage	51%	4%	27%	14%	5%
Overall by People (Assumes 92% Evacuate)*	52,899	4,149	28,005	14,003	4,668
Responses by Demographics					
White	52%	3%	27%	15%	3%
African American	42%	12%	35%	4%	15%
Other	54%	0%	13%	17%	8%

Most likely destinations during evacuation from a Category 3 or Greater Storm

Category	Yes, will take private vehicle (Q65)	If Yes, Would ride with someone	If Yes – Will take 1 vehicle	If Yes – Will take 2 vehicles	If Yes – Will take 3 or more vehicles	If Yes, will take boat or trailer
Overall	98%	2%	47%	40%	10%	30%
By Households*	36,326	1,324	17,210	14,752	3,596	10,879
By # of Vehicles*	N/A	N/A	17,210	29,503	10,780	N/A
<i>Total Private Vehicles Evacuating the Terrebonne Parish</i>		57,494	<i>Total Private and Trailers Evacuating Terrebonne Parish</i>			68,373

How people will evacuate and with how many vehicles, boats, or trailers

* Percentage of people/households who said they are “very likely” or “somewhat likely” to evacuate with a Mandatory Evacuation Order for a Category 3 or stronger hurricane.

Most Common Roads Identified as Evacuation Routes	
I-10	40%
HWY 90	39%
I-55	15%
I-49	14%
LA 1	14%

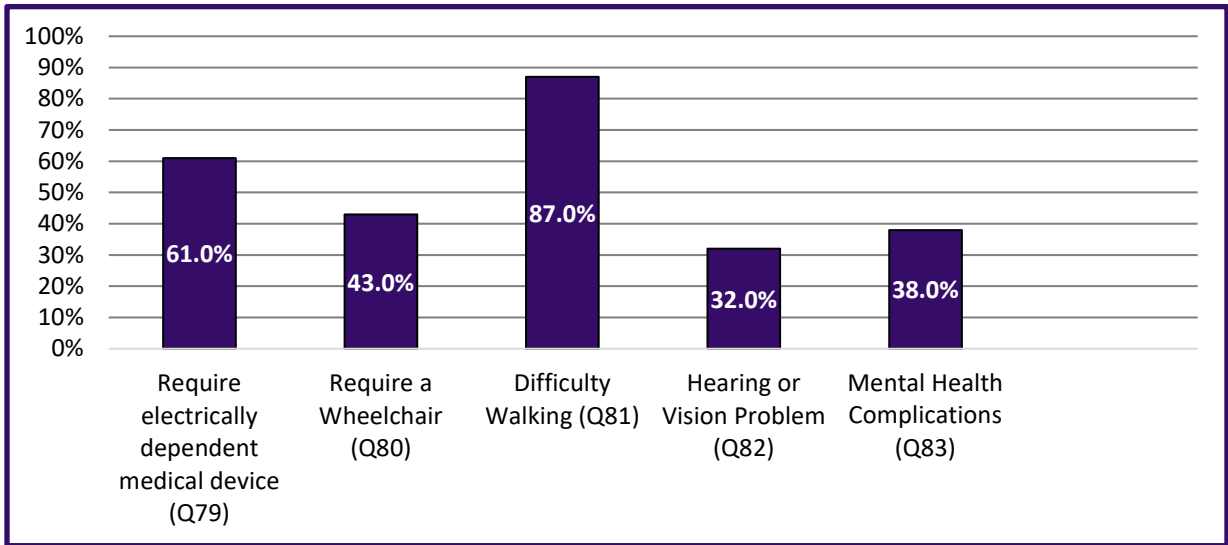
Most Likely Destination States	
Louisiana	24%
Texas	21%
Mississippi	11%
Arkansas	8%
Tennessee	6%
Other	16%
Don't Know	15%

Most Likely Destination Cities	
Houston	6%
Baton Rouge	3%
Dallas	3%
Alexandria	2%
Atlanta	2%

Most likely destinations and route to be used by evacuees from Terrebonne Parish

Behavioral Analysis Summary for Terrebonne Parish During Hurricane Events

Access and Functional Needs



Types of medical needs and disabilities identified through the survey for Region 3 (Sample = 19).

Information Sources

Survey Question	Identified Information Sources	
<i>If a hurricane threatens your area, where would you get MOST of your information as you make your evacuation decision?</i>	The Internet	11%
	Radio	30%
	Television	71%
	Cellphone	9%
	Friends or Relatives	3%
	Local First Responders	1%
	Local Government	3%
	Other	2%

Where respondents receive their information during hurricane events (Sources include multiple responses by many participants).

Behavioral Analysis Summary for Terrebonne Parish During Hurricane Events

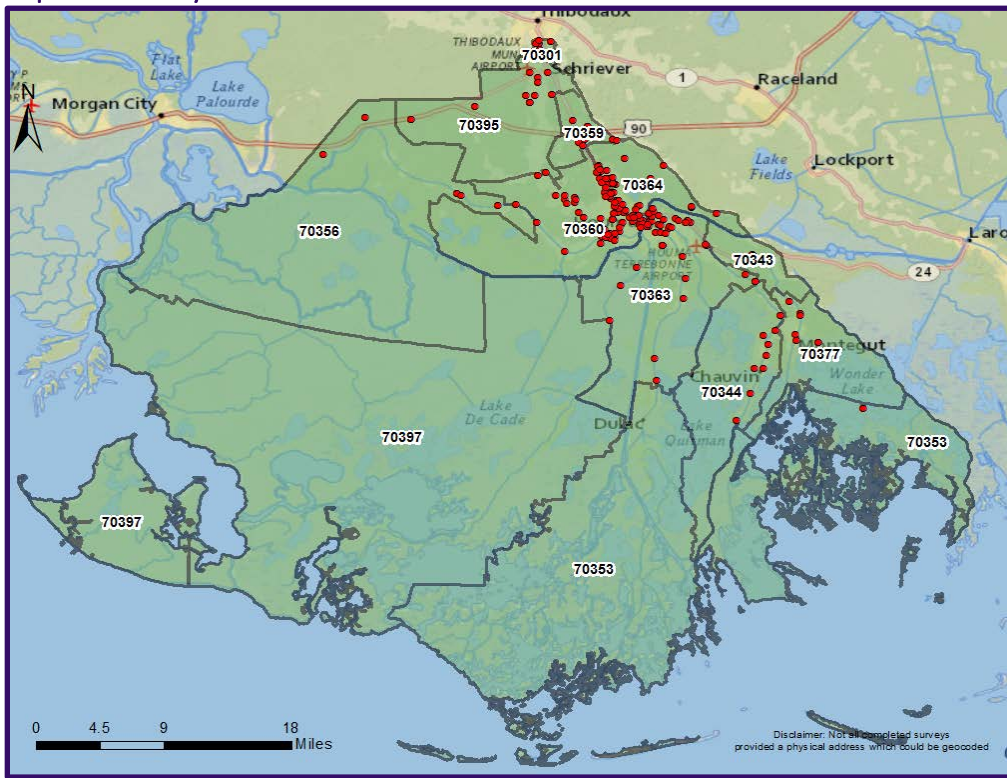
Survey Respondents Demographics

Demographic	Total Sample	Census Data (Terrebonne)
	N = 205	112,742
Gender		
Male	45%	49%
Female	55%	51%
Age		
18-24	6%	13%
25-44	22%	36%
45-64	49%	35%
65-84	21%	15%
85 and over	3%	2%
Race		
White	75%	71%
African American	13%	19%
Asian	0%	1%
Other	12%	9%
Hispanic, Latino or Spanish Origin?		
Yes	7%	5%
No	93%	95%
Income		
Under \$10,000	8%	9%
\$10,000-\$14,999	3%	5%
\$15,000-\$24,999	13%	13%
\$25,000-\$34,999	7%	10%
\$35,000-\$49,999	5%	15%
\$50,000-\$74,999	23%	17%
\$75,000-\$99,999	12%	12%
\$100,000-\$149,999	17%	13%
\$150,000-\$199,999	7%	4%
\$200,000 or more	6%	3%
Full-time student	3%	n/a
Other	n/a	n/a

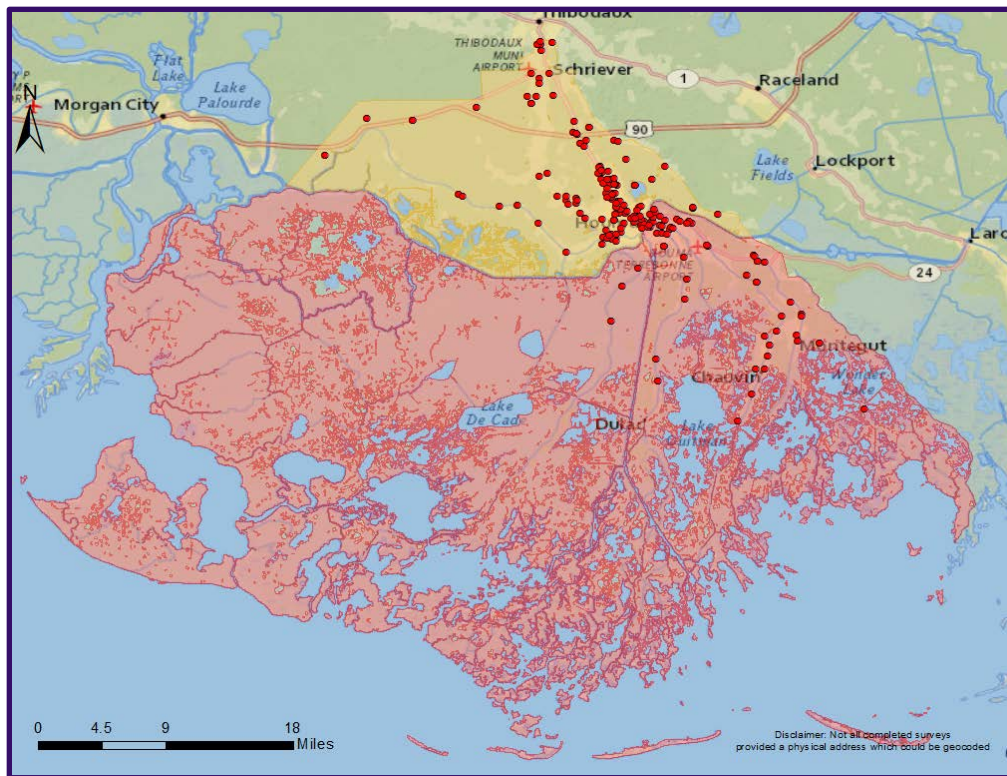
Demographic	Total Sample	Census Data (Terrebonne)
	N = 205	112,742
Highest Level of Education		
Less than 9th grade	2%	10%
9th to 12th grade, but did not graduate	9%	13%
High school diploma	40%	40%
Some college or vocational school, but not degree	21%	19%
A 2-year college degree	8%	5%
A 4-year college degree	16%	10%
Graduate or professional degree	5%	4%
Employment Status		
Employed full-time (35 hours + per week)	45%	n/a
Employed part-time (Less than 35 hours per week)	7%	n/a
Unemployed	9%	6%
Retired	24%	n/a
Stay at home caregiver	6%	n/a
Full-time student	3%	n/a
Other	7%	n/a
Housing Type		
One unit structure	77%	70%
Two-or-more-unit structure	8%	13%
Mobile homes and other	15%	17%
Housing Tenure		
Owner	89%	72%
Renter	11%	28%

Behavioral Analysis Summary for Terrebonne Parish During Hurricane Events

Survey Respondents by Location



Survey Respondents by Zip Codes



Survey Respondents by Evacuation Phase