

## Tangipahoa Parish

### Total Population by Evacuation Phase

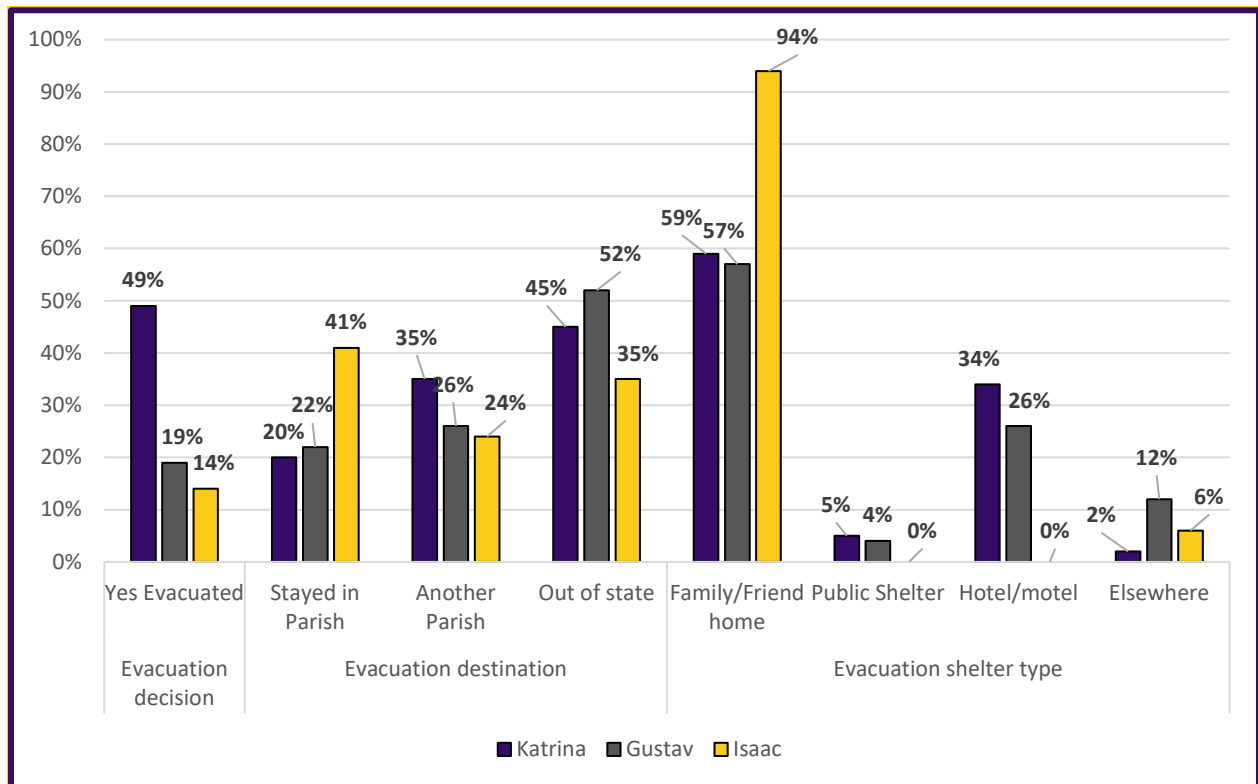
Parish	Phase 1 Evacuation	Phase 2 Evacuation	Phase 3 Evacuation	Total Population
Tangipahoa	N/A	N/A	34,414	125,486
			27.4	

Total population by Evacuation Phase in Tangipahoa Parish

### Previous Evacuation Behavior

Survey Question	Previous Disaster Experience in Current Home	
<b>During the time you've lived in this home, have any of the following hazards affected you, your home or the people who live with you?</b>	Flooding from rain	19%
	Flooding from river, canal, or lake	23%
	Flooding from storm surge or wave action	4%
	Any type of flooding	34%
	Wind damage	37%
	No previous damage at current home	43%

Previous experience with flooding and wind damage in current homes.

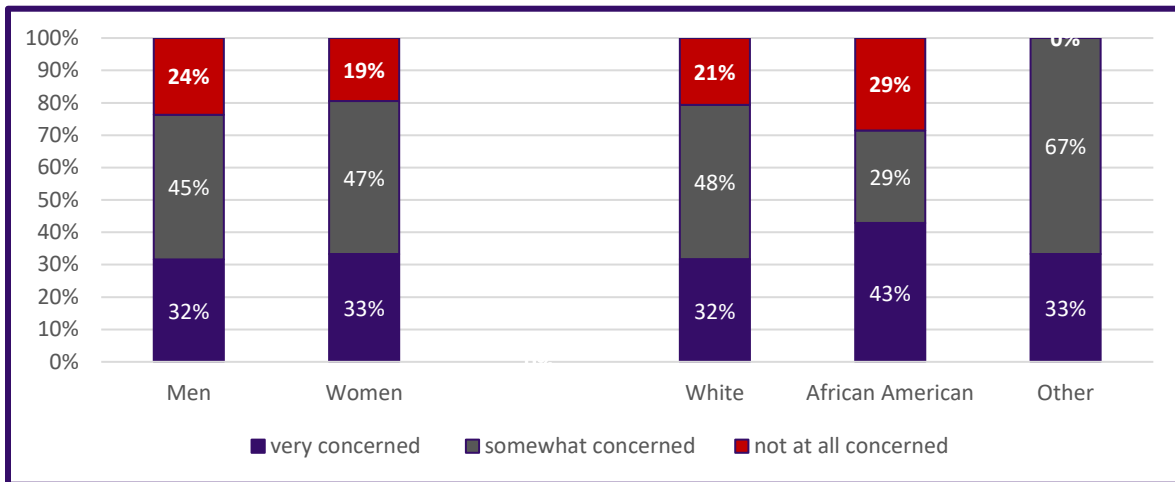


Evacuation decisions, destination, and shelter type during Hurricanes Katrina, Gustav and Isaac.

## Behavioral Analysis Summary for Tangipahoa Parish During Hurricane Events

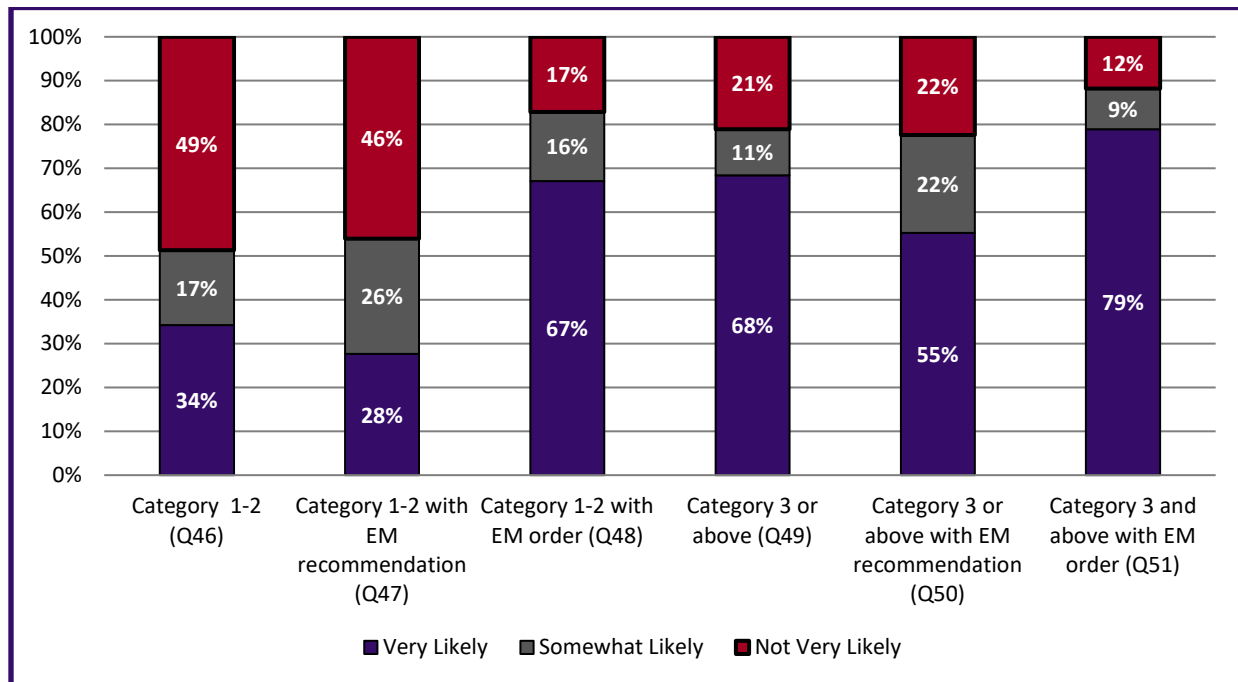
### Risk perception of hurricanes and their effects.

Threat	Very Concerned	Somewhat Concerned	Not at all Concerned
Threat of Hurricane	33%	46%	21%
Flooding of Home	15%	31%	55%
Damage from Winds	34%	47%	18%



*The variation in perceived threat of a hurricane impacting people varies among demographic data.*

### Evacuation Intentions



## Behavioral Analysis Summary for Tangipahoa Parish During Hurricane Events

### Overall evacuation intentions for Tangipahoa Parish

Most likely destination for if Evacuation for a Category 3 or Greater					
Category	Family/Friend	Public shelter	Hotel/Motel	Someplace else	Don't know
Overall by Percentage	49%	3%	34%	12%	3%
Overall by People (Assumes 88% Evacuate)*	14,730	796	10,351	3,583	796
Responses by Demographics					
White	44%	3%	38%	11%	3%
African American	71%	0%	29%	0%	0%
Other	67%	0%	0%	33%	0%

*Most likely destinations during evacuation from a Category 3 or Greater Storm*

Category	Yes, will take private vehicle (Q65)	If Yes, Would ride with someone	If Yes – Will take 1 vehicle	If Yes – Will take 2 vehicles	If Yes – Will take 3 or more vehicles	If Yes, will take boat or trailer
Overall	100%	0%	51%	37%	12%	26%
By Households*	34,414	0	5,628	4,040	1,299	2,886
By # of Vehicles*	N/A	N/A	5,628	8,081	3,896	N/A
<i>Total Private Vehicles Evacuating the Tangipahoa Parish</i>		17,605	<i>Total Private and Trailers Evacuating Tangipahoa Parish</i>			20,491

*How people will evacuate and with how many vehicles, boats, or trailers*

\* Percentage of people/households who said they are “very likely” or “somewhat likely” to evacuate with a Mandatory Evacuation Order for a Category 3 or stronger hurricane.

Most Common Roads Identified as Evacuation Routes	
I-55	45%
I-12	37%
LA 1	12%
I-10	8%
I-59	4%

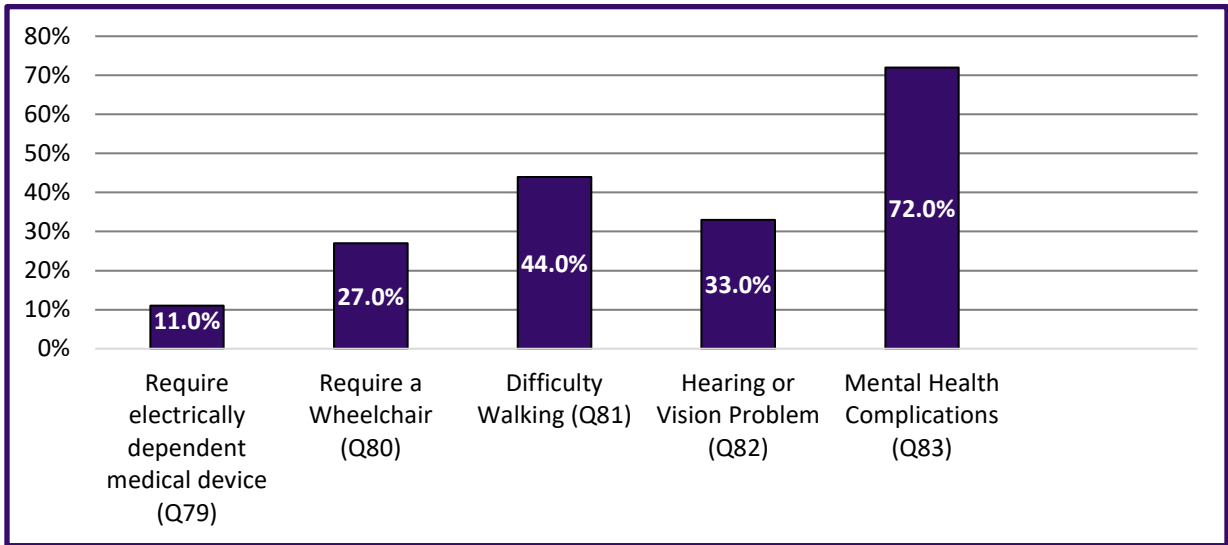
Most Likely Destination States	
Texas	18%
Louisiana	17%
Mississippi	17%
Tennessee	9%
Arkansas	7%
Other	32%
Don't Know	0%

Most Likely Destination Cities	
Houston	5%
Dallas	4%
Nashville	4%
Hammond	3%
Jackson	3%

*Most likely destinations and route to be used by evacuees from Tangipahoa Parish*

## Behavioral Analysis Summary for Tangipahoa Parish During Hurricane Events

### Access and Functional Needs



*Types of medical needs and disabilities identified through the survey for Region 9 (Sample = 9).*

### Information Sources

Survey Question	Identified Information Sources	
<b><i>If a hurricane threatens your area, where would you get MOST of your information as you make your evacuation decision?</i></b>	The Internet	16%
	Radio	34%
	Television	66%
	Cellphone	8%
	Friends or Relatives	2%
	Local First Responders	0%
	Local Government	0%
	Other	5%

*Where respondents receive their information during hurricane events (Sources include multiple responses by many participants).*

## Behavioral Analysis Summary for Tangipahoa Parish During Hurricane Events

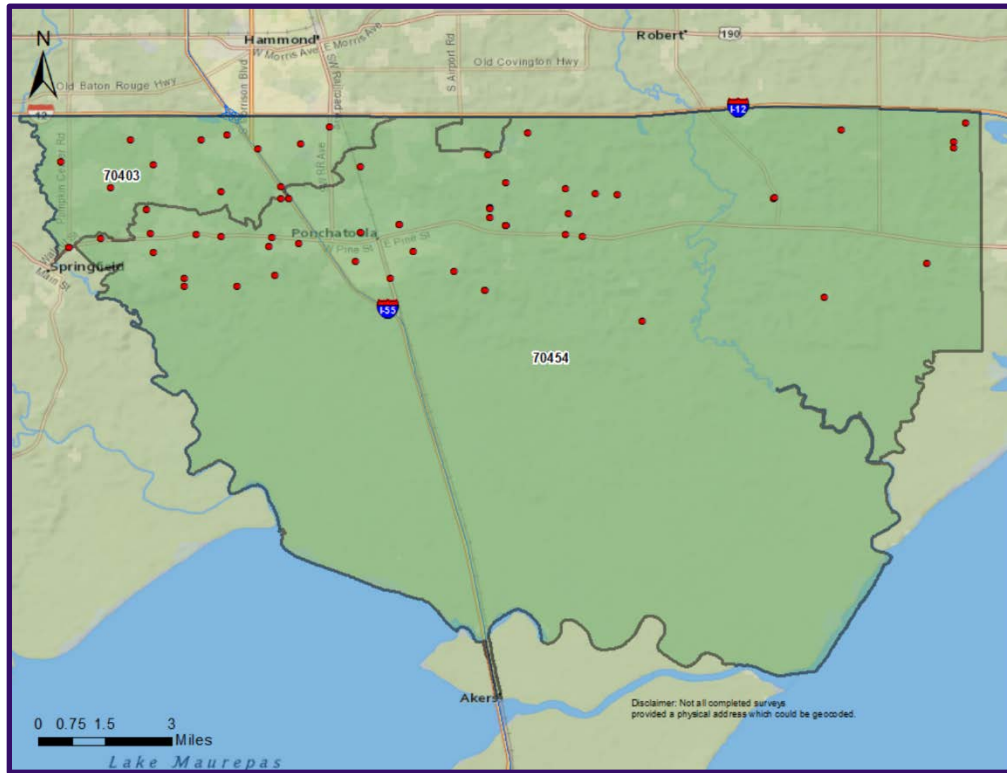
### Survey Respondents Demographics

Demographic	Total Sample	Census Data (Tangipahoa)
	<b>N = 122</b>	<b>125,486</b>
<b>Gender</b>		
Male	51%	49%
Female	49%	51%
<b>Age</b>		
18-24	7%	15%
25-44	27%	35%
45-64	42%	33%
65-84	23%	15%
85 and over	1%	2%
<b>Race</b>		
White	86%	67%
African American	10%	30%
Asian	0%	1%
Other	4%	2%
<b>Hispanic, Latino or Spanish Origin?</b>		
Yes	3%	4%
No	97%	96%
<b>Income</b>		
Under \$10,000	5%	11%
\$10,000-\$14,999	3%	7%
\$15,000-\$24,999	12%	15%
\$25,000-\$34,999	7%	11%
\$35,000-\$49,999	12%	14%
\$50,000-\$74,999	22%	16%
\$75,000-\$99,999	12%	11%
\$100,000-\$149,999	17%	10%
\$150,000-\$199,999	3%	4%
\$200,000 or more	7%	2%
Full-time student	4%	n/a
Other	n/a	n/a

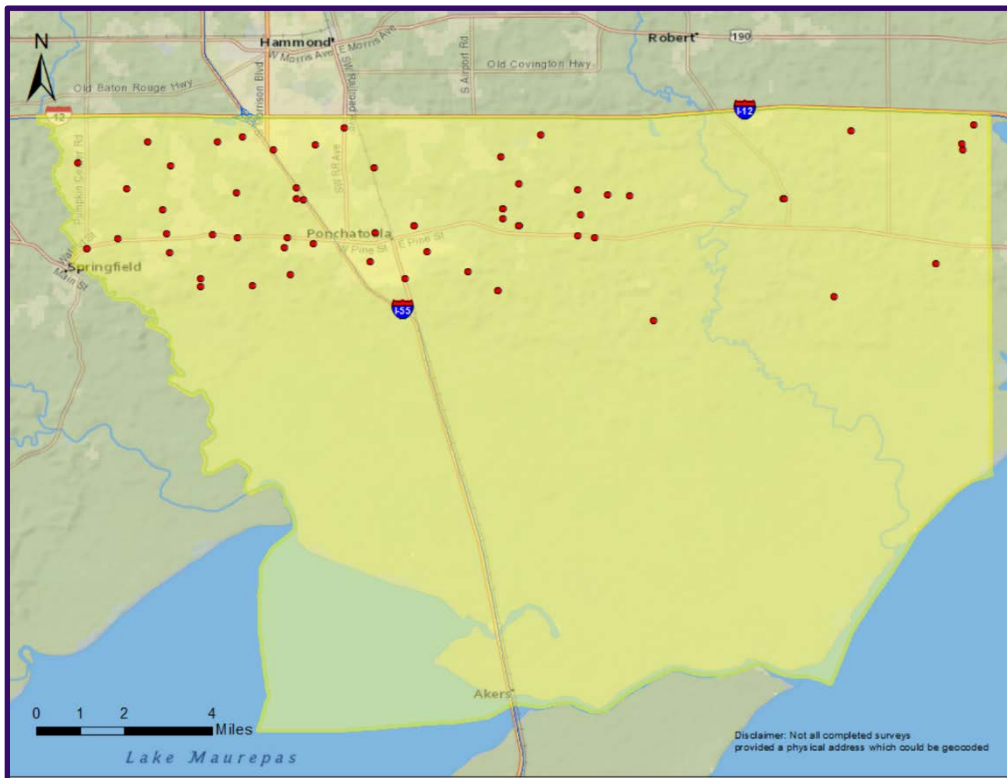
Demographic	Total Sample	Census Data (Tangipahoa)
	<b>N = 122</b>	<b>125,486</b>
<b>Highest Level of Education</b>		
Less than 9th grade	4%	5%
9th to 12th grade, but did not graduate	5%	14%
High school diploma	28%	36%
Some college or vocational school, but not degree	27%	22%
A 2-year college degree	7%	5%
A 4-year college degree	15%	13%
Graduate or professional degree	15%	6%
<b>Employment Status</b>		
Employed full-time (35 hours + per week)	49%	n/a
Employed part-time (Less than 35 hours per week)	5%	n/a
Unemployed	5%	11%
Retired	22%	n/a
Stay at home caregiver	7%	n/a
Full-time student	4%	n/a
Other	8%	n/a
<b>Housing Type</b>		
One unit structure	82%	64%
Two-or-more-unit structure	4%	14%
Mobile homes and other	12%	22%
<b>Housing Tenure</b>		
Owner	87%	70%
Renter	13%	30%

# Behavioral Analysis Summary for Tangipahoa Parish During Hurricane Events

## Survey Respondents by Location



## Survey Respondents by Zip Codes



## Survey Respondents by Evacuation Phase