

St. Tammany Parish

Total Population by Evacuation Phase

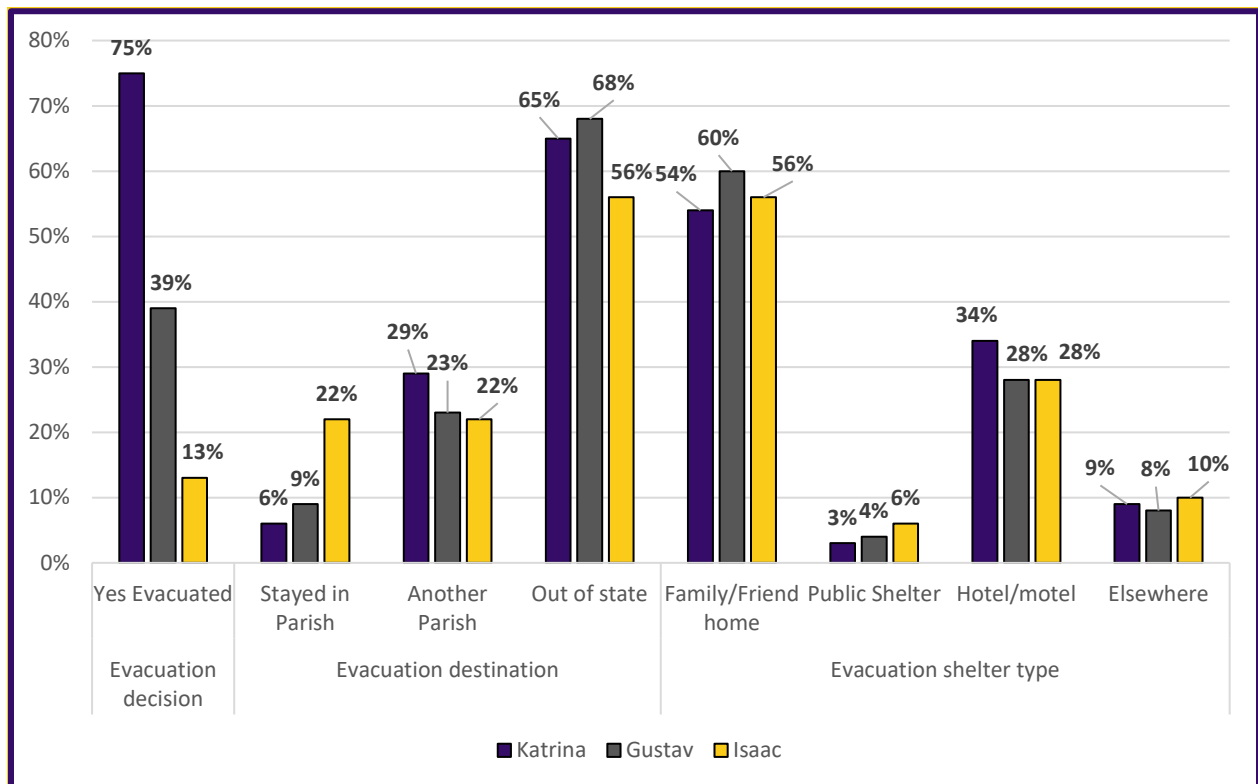
Parish	Phase 1 Evacuation	Phase 2 Evacuation	Phase 3 Evacuation	Total Population
St. Tammany	N/A	N/A	147,471	242,960
			61%	

Total population by Evacuation Phase in St. Tammany Parish

Previous Evacuation Behavior

Survey Question	Previous Disaster Experience in Current Home	
During the time you've lived in this home, have any of the following hazards affected you, your home or the people who live with you?	Flooding from rain	15%
	Flooding from river, canal, or lake	12%
	Flooding from storm surge or wave action	12%
	Any type of flooding	27%
	Wind damage	41%
	No previous damage at current home	46%

Previous experience with flooding and wind damage in current homes.

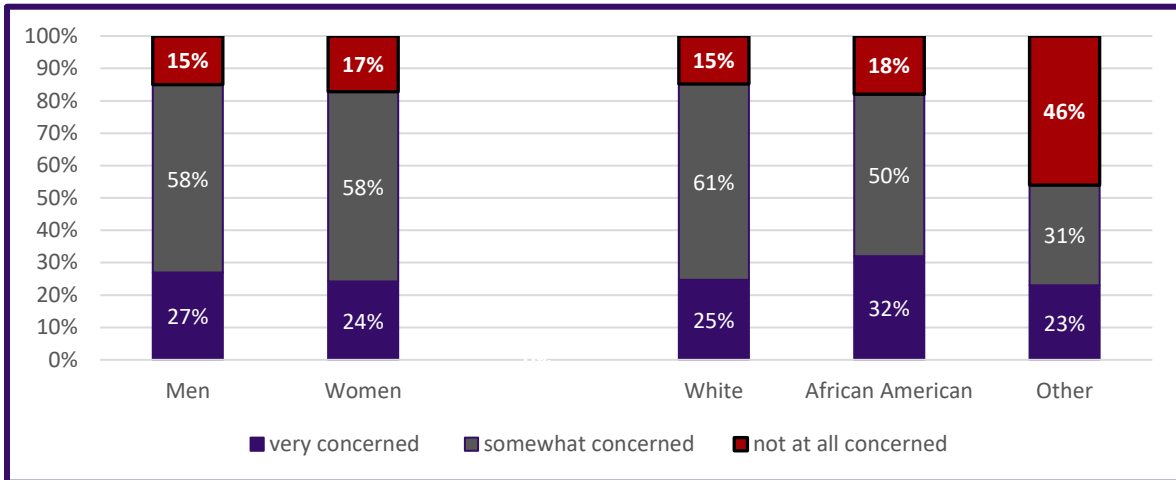


Evacuation decisions, destination, and shelter type during Hurricanes Katrina, Gustav and Isaac.

Behavioral Analysis Summary for St. Tammany Parish During Hurricane Events

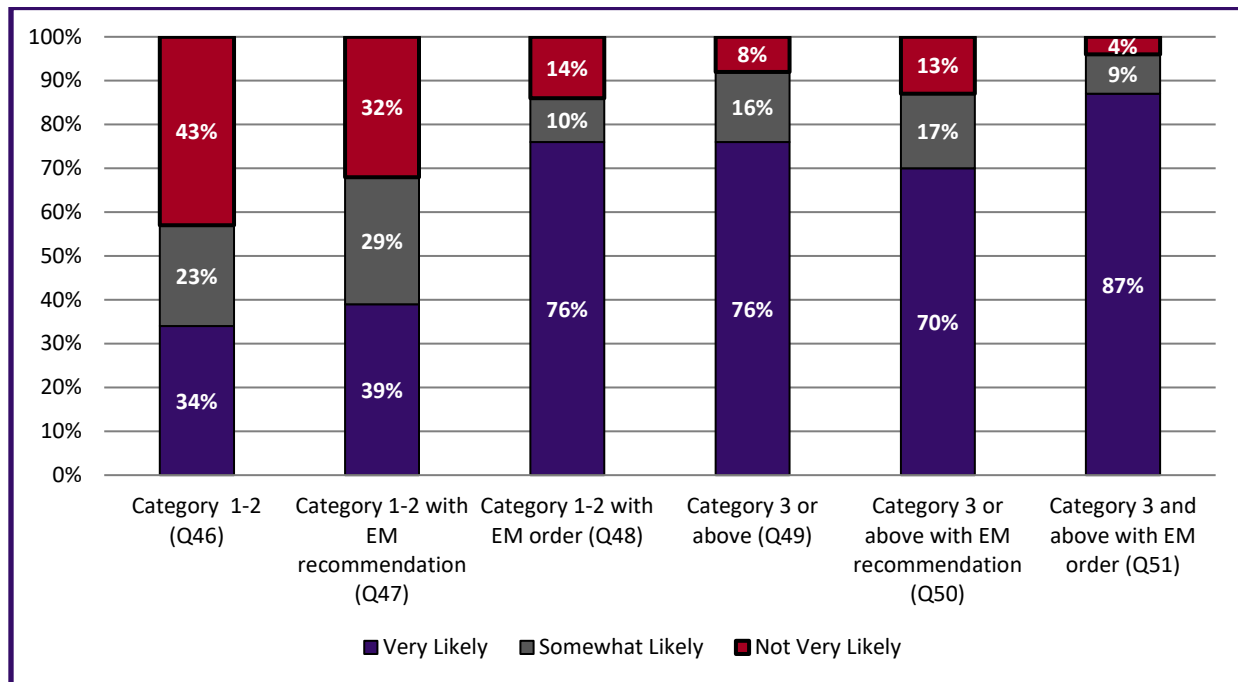
Risk perception of hurricanes and their effects.

Threat	Very Concerned	Somewhat Concerned	Not at all Concerned
Threat of Hurricane	26%	58%	16%
Flooding of Home	11%	37%	52%
Damage from Winds	34%	51%	15%



The variation in perceived threat of a hurricane impacting people varies among demographic data.

Evacuation Intentions



Behavioral Analysis Summary for St. Tammany Parish During Hurricane Events

Overall evacuation intentions for St. Tammany Parish

Most likely destination for if Evacuation for a Category 3 or Greater					
Category	Family/Friend	Public shelter	Hotel/Motel	Someplace else	Don't know
Overall by Percentage	55%	0%	32%	9%	3%
Overall by People (Assumes 96% Evacuate)*	78,455	614	47,314	12,904	4,916
Responses by Demographics					
White	56%	0%	32%	9%	3%
African American	68%	4%	25%	4%	0%
Other	31%	0%	31%	23%	15%

Most likely destinations during evacuation from a Category 3 or Greater Storm

Category	Yes, will take private vehicle (Q65)	If Yes, Would ride with someone	If Yes – Will take 1 vehicle	If Yes – Will take 2 vehicles	If Yes – Will take 3 or more vehicles	If Yes, will take boat or trailer
Overall	98%	2%	45%	39%	14%	24%
By Households*	51,053	891	23,619	20,499	7,130	12,383
By # of Vehicles*	N/A	N/A	23,619	40,999	21,391	N/A
<i>Total Private Vehicles Evacuating the St. Tammany Parish</i>		86,008	<i>Total Private and Trailers Evacuating St. Tammany Parish</i>			98,391

How people will evacuate and with how many vehicles, boats, or trailers

* Percentage of people/households who said they are “very likely” or “somewhat likely” to evacuate with a Mandatory Evacuation Order for a Category 3 or stronger hurricane.

Most Common Roads Identified as Evacuation Routes	
I-10	40%
HWY 90	39%
I-55	15%
I-49	14%
LA 1	14%

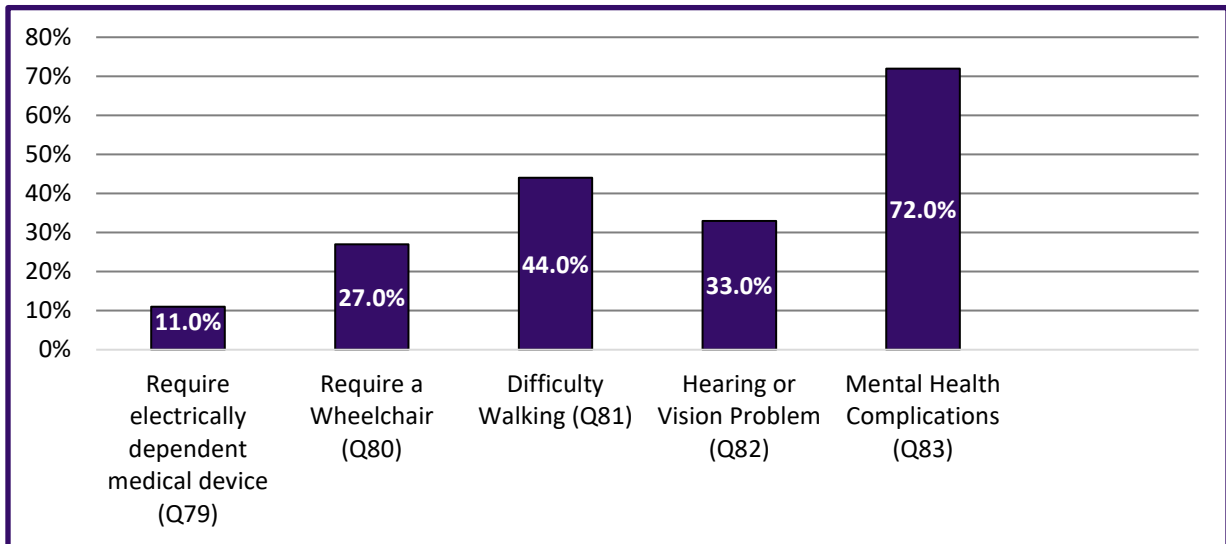
Most Likely Destination States	
Louisiana	24%
Texas	21%
Mississippi	11%
Arkansas	8%
Tennessee	6%
Other	16%
Don't Know	15%

Most Likely Destination Cities	
Houston	6%
Baton Rouge	3%
Dallas	3%
Alexandria	2%
Atlanta	2%

Most likely destinations and route to be used by evacuees from St. Tammany Parish

Behavioral Analysis Summary for St. Tammany Parish During Hurricane Events

Access and Functional Needs



Types of medical needs and disabilities identified through the survey for Region 9 (Sample = 9).

Information Sources

Survey Question	Identified Information Sources	
<i>If a hurricane threatens your area, where would you get MOST of your information as you make your evacuation decision?</i>	The Internet	11%
	Radio	30%
	Television	71%
	Cellphone	9%
	Friends or Relatives	3%
	Local First Responders	1%
	Local Government	3%
	Other	2%

Where respondents receive their information during hurricane events (Sources include multiple responses by many participants).

Behavioral Analysis Summary for St. Tammany Parish During Hurricane Events

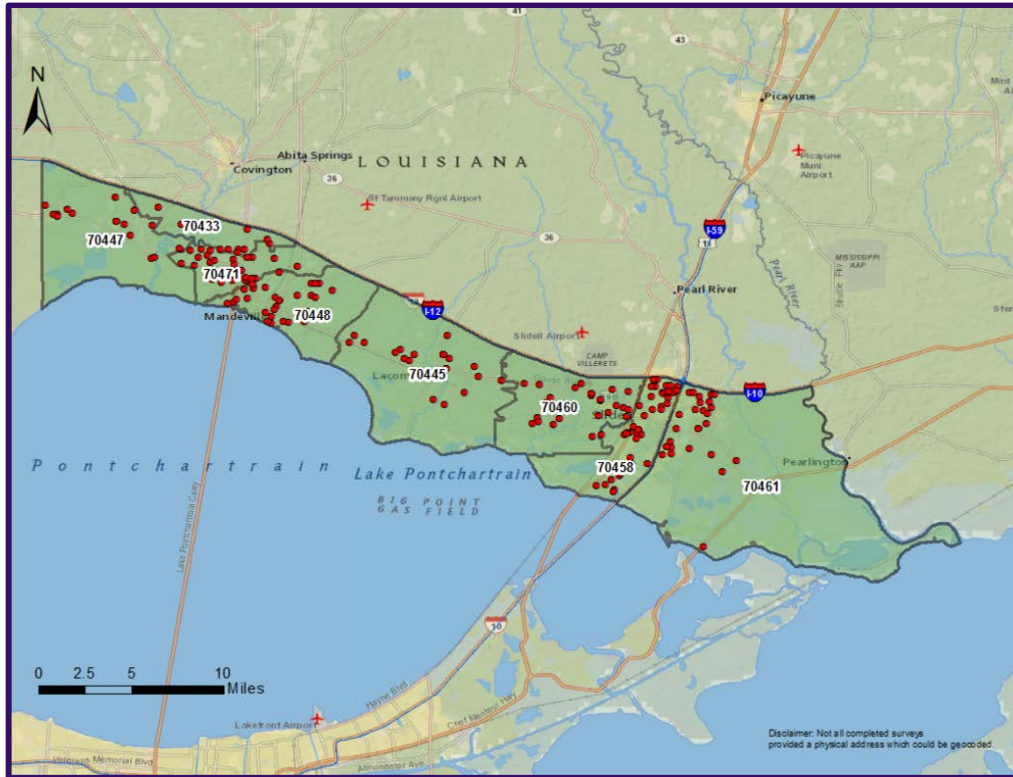
Survey Respondents Demographics

Demographic	Total Sample	Census Data (St. Tammany)
	N = 296	242,960
Gender		
Male	45%	49%
Female	55%	51%
Age		
18-24	6%	13%
25-44	22%	36%
45-64	49%	35%
65-84	21%	15%
85 and over	3%	2%
Race		
White	75%	71%
African American	13%	19%
Asian	0%	1%
Other	12%	9%
Hispanic, Latino or Spanish Origin?		
Yes	7%	5%
No	93%	95%
Income		
Under \$10,000	8%	9%
\$10,000-\$14,999	3%	5%
\$15,000-\$24,999	13%	13%
\$25,000-\$34,999	7%	10%
\$35,000-\$49,999	5%	15%
\$50,000-\$74,999	23%	17%
\$75,000-\$99,999	12%	12%
\$100,000-\$149,999	17%	13%
\$150,000-\$199,999	7%	4%
\$200,000 or more	6%	3%
Full-time student	3%	n/a
Other	n/a	n/a

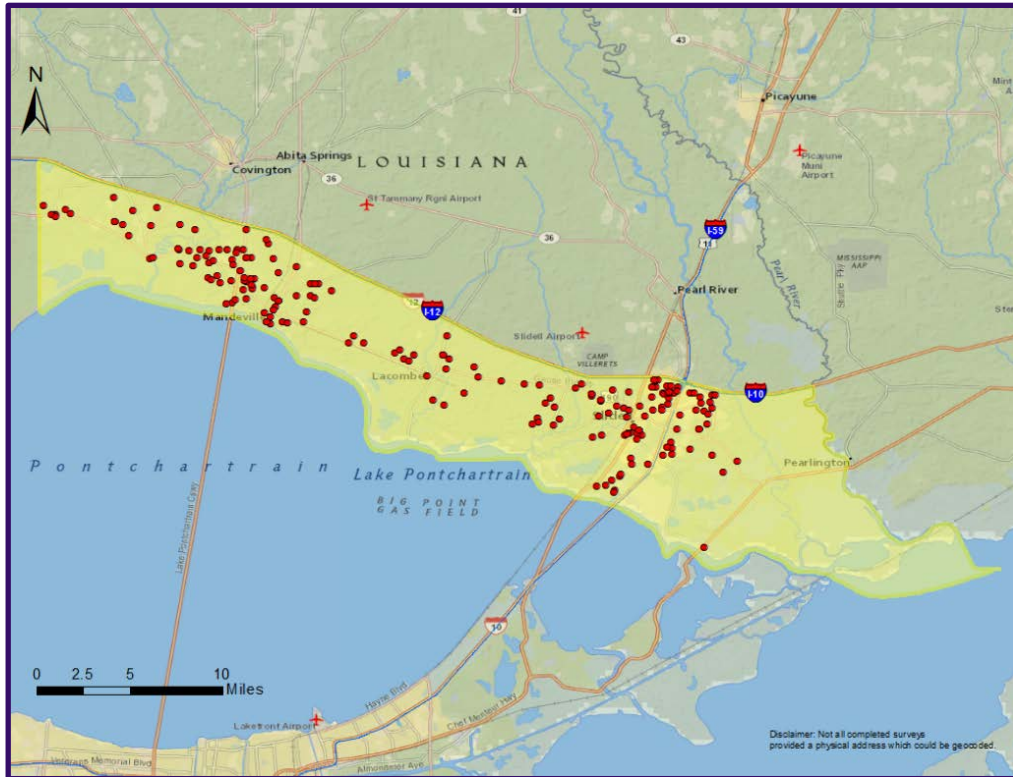
Demographic	Total Sample	Census Data (St. Tammany)
	N = 296	242,960
Highest Level of Education		
Less than 9th grade	2%	10%
9th to 12th grade, but did not graduate	9%	13%
High school diploma	40%	40%
Some college or vocational school, but not degree	21%	19%
A 2-year college degree	8%	5%
A 4-year college degree	16%	10%
Graduate or professional degree	5%	4%
Employment Status		
Employed full-time (35 hours + per week)	45%	n/a
Employed part-time (Less than 35 hours per week)	7%	n/a
Unemployed	9%	6%
Retired	24%	n/a
Stay at home caregiver	6%	n/a
Full-time student	3%	n/a
Other	7%	n/a
Housing Type		
One unit structure	77%	70%
Two-or-more-unit structure	8%	13%
Mobile homes and other	15%	17%
Housing Tenure		
Owner	89%	72%
Renter	11%	28%

Behavioral Analysis Summary for St. Tammany Parish During Hurricane Events

Survey Respondents by Location



Survey Respondents by Zip Codes



Survey Respondents by Evacuation Phase