

St. John Parish

Total Population by Evacuation Phase

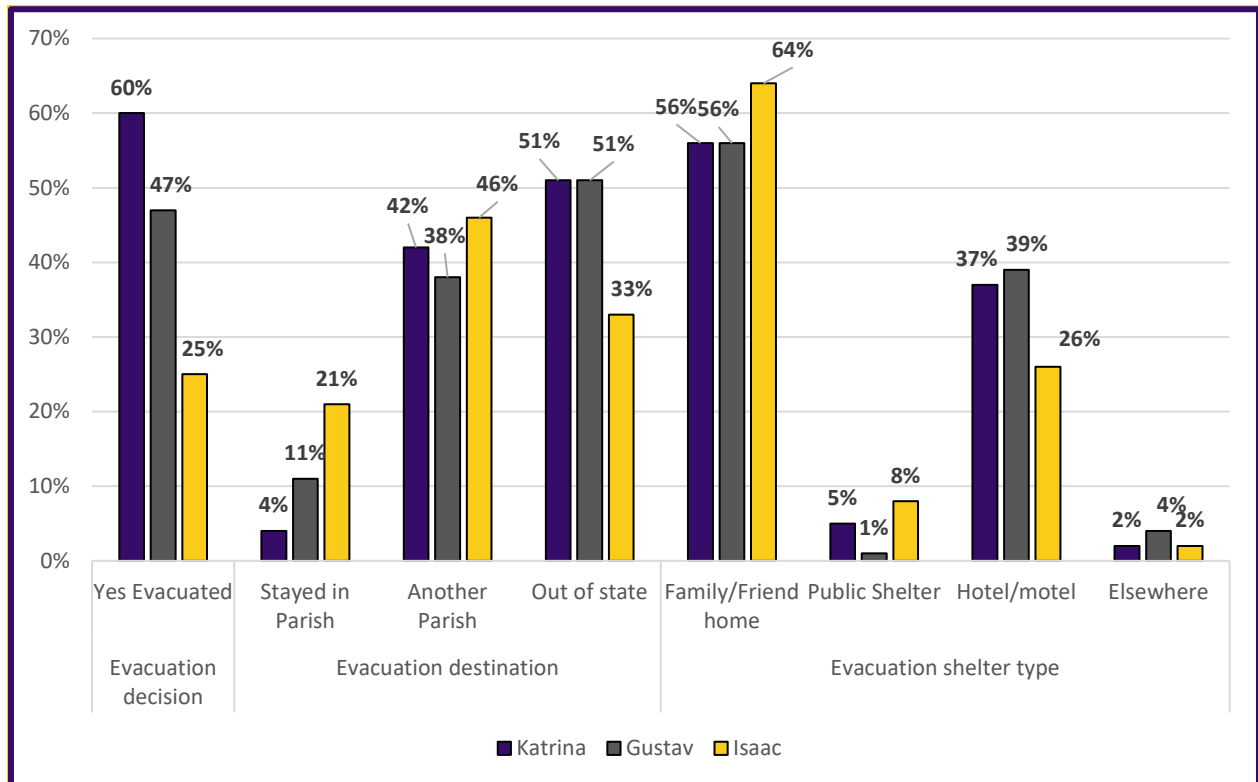
Parish	Phase 1 Evacuation	Phase 2 Evacuation	Phase 3 Evacuation	Total Population
St. John	N/A	3,269	40,893	44,161
		7%	93%	

Total population by Evacuation Phase in St. John Parish

Previous Evacuation Behavior

Survey Question	Previous Disaster Experience in Current Home	
During the time you've lived in this home, have any of the following hazards affected you, your home or the people who live with you?	Flooding from rain	20%
	Flooding from river, canal, or lake	20%
	Flooding from storm surge or wave action	13%
	Any type of flooding	32%
	Wind damage	45%
	No previous damage at current home	43%

Previous experience with flooding and wind damage in current homes.

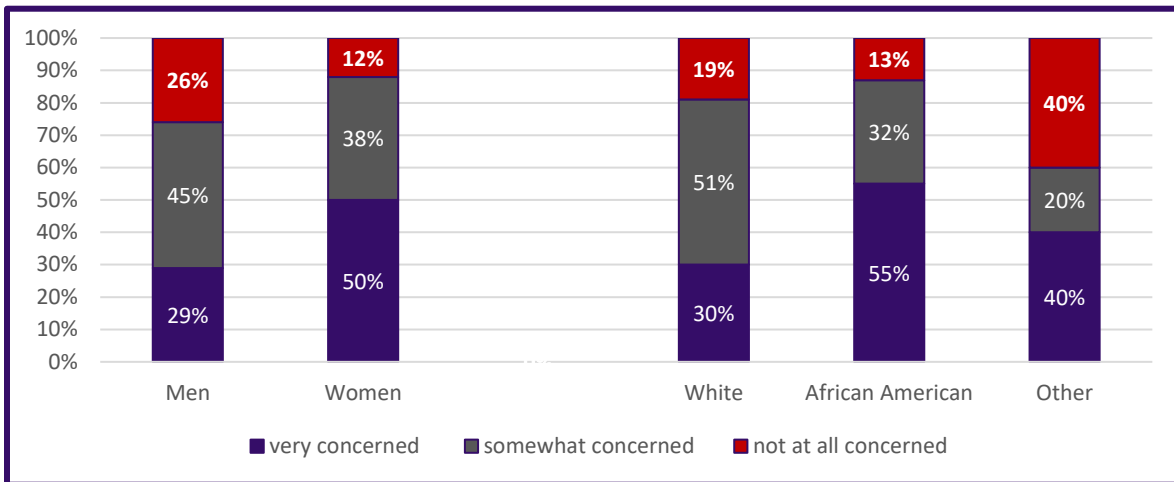


Evacuation decisions, destination, and shelter type during Hurricanes Katrina, Gustav and Isaac.

Behavioral Analysis Summary for St. John Parish During Hurricane Events

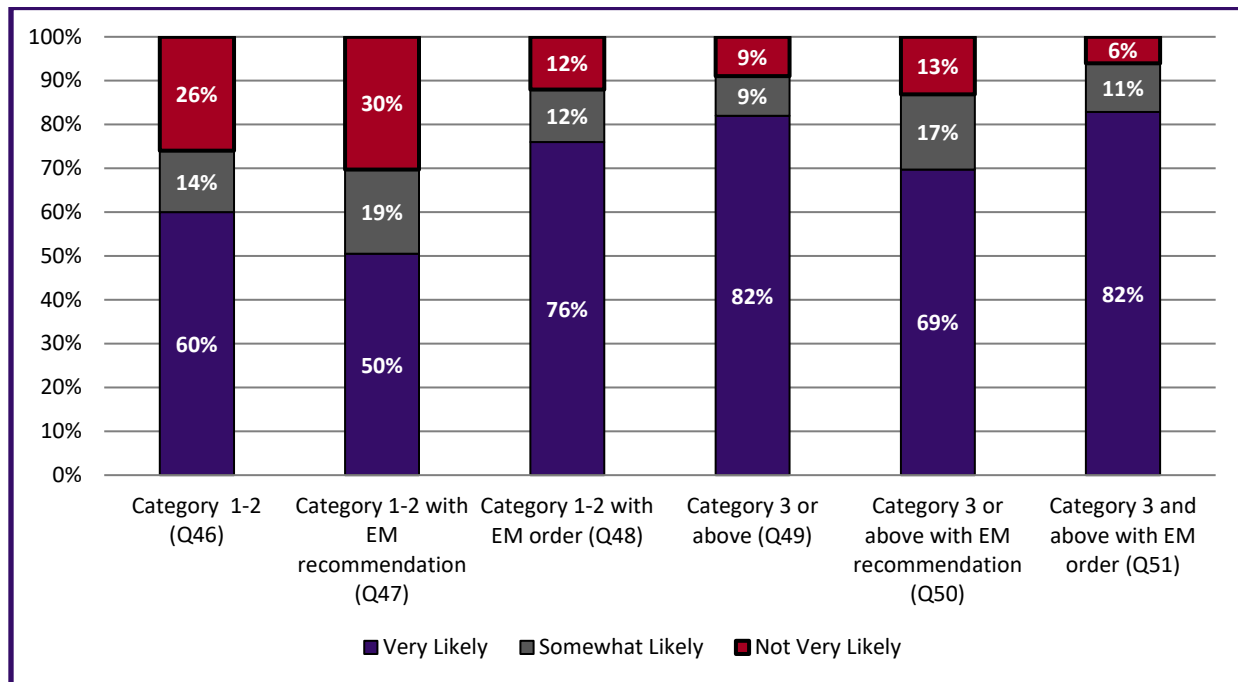
Risk perception of hurricanes and their effects.

Threat	Very Concerned	Somewhat Concerned	Not at all Concerned
Threat of Hurricane	42%	40%	18%
Flooding of Home	24%	43%	33%
Damage from Winds	32%	47%	20%



The variation in perceived threat of a hurricane impacting people varies among demographic data.

Evacuation Intentions



Behavioral Analysis Summary for St. John Parish During Hurricane Events

Overall evacuation intentions for St. John Parish

Most likely destination for if Evacuation for a Category 3 or Greater					
Category	Family/Friend	Public shelter	Hotel/Motel	Someplace else	Don't know
Overall by Percentage	48%	4%	38%	9%	2%
Overall by People (Assumes 94% Evacuate)*	19,842	1,566	15,665	3,655	783
Responses by Demographics					
White	52%	1%	32%	11%	4%
African American	45%	7%	42%	6%	0%
Other	40%	0%	50%	10%	0%

Most likely destinations during evacuation from a Category 3 or Greater Storm

Category	Yes, will take private vehicle (Q65)	If Yes, Would ride with someone	If Yes – Will take 1 vehicle	If Yes – Will take 2 vehicles	If Yes – Will take 3 or more vehicles	If Yes, will take boat or trailer
Overall	99%	1%	2%	62%	35%	17%
By Households*	14,230	207	311	8,917	4,977	2,447
By # of Vehicles*	N/A	N/A	311	17,834	14,931	N/A
<i>Total Private Vehicles Evacuating the St. John Parish</i>		33,075	<i>Total Private and Trailers Evacuating St. John Parish</i>			35,523

How people will evacuate and with how many vehicles, boats, or trailers

* Percentage of people/households who said they are “very likely” or “somewhat likely” to evacuate with a Mandatory Evacuation Order for a Category 3 or stronger hurricane.

Most Common Roads Identified as Evacuation Routes	
I-10	47%
I-55	34%
HWY 61	27%
LA 1	11%
I-12	4%

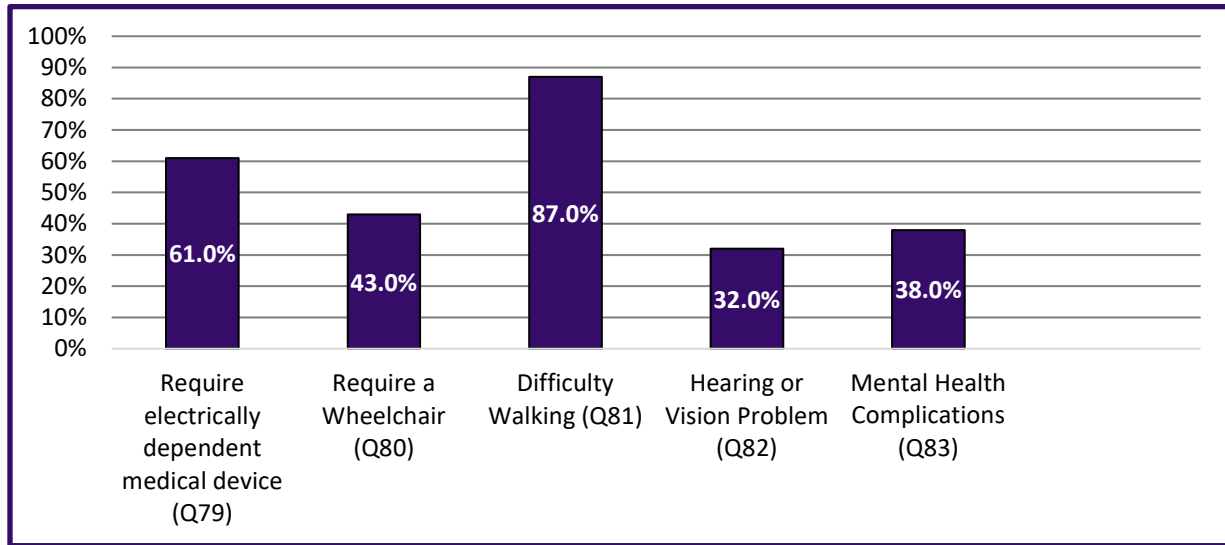
Most Likely Destination States	
Texas	19%
Louisiana	16%
Mississippi	10%
Tennessee	8%
Alabama	5%
Other	13%
Don't Know	25%

Most Likely Destination Cities	
Houston	7%
Dallas	6%
Baton Rouge	6%
Atlanta	3%
Memphis	2%

Most likely destinations and route to be used by evacuees from St. John Parish

Behavioral Analysis Summary for St. John Parish During Hurricane Events

Access and Functional Needs



Types of medical needs and disabilities identified through the survey for Region 3 (Sample = 19).

Information Sources

Survey Question	Identified Information Sources	
<i>If a hurricane threatens your area, where would you get MOST of your information as you make your evacuation decision?</i>	The Internet	7%
	Radio	34%
	Television	82%
	Cellphone	18%
	Friends or Relatives	2%
	Local First Responders	4%
	Local Government	5%
	Other	2%

Where respondents receive their information during hurricane events (Sources include multiple responses by many participants).

Behavioral Analysis Summary for St. John Parish During Hurricane Events

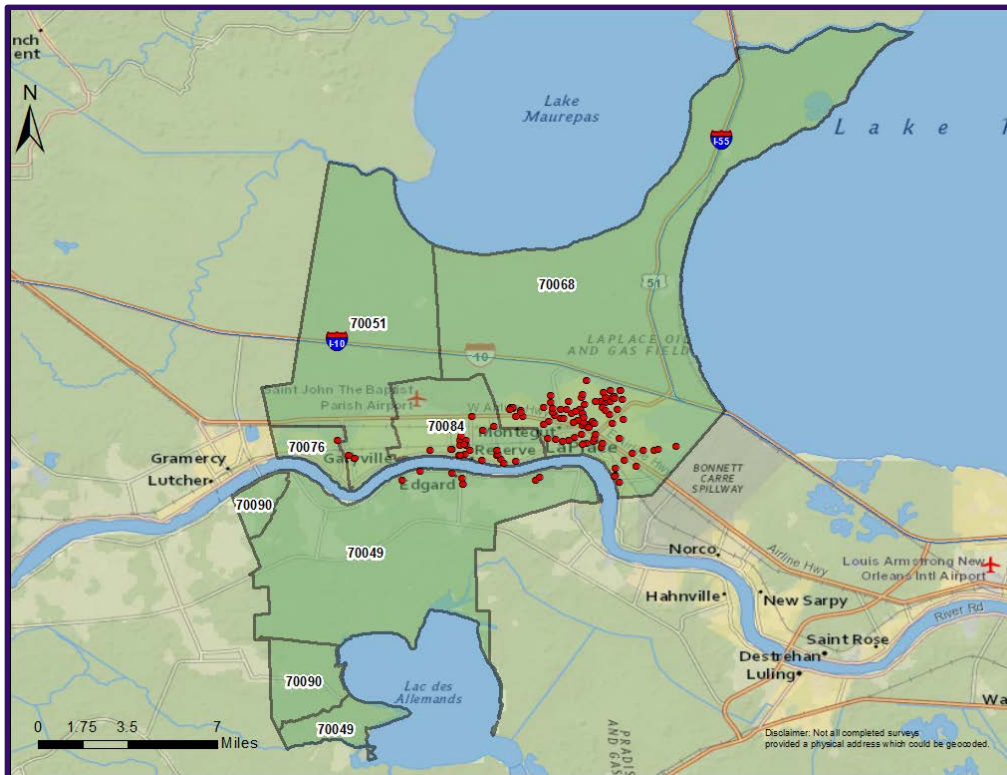
Survey Respondents Demographics

Demographic	Total Sample	Census Data (St. John)
	N = 159	44,161
Gender		
Male	42%	49%
Female	58%	51%
Age		
18-24	7%	13%
25-44	26%	34%
45-64	38%	37%
65-84	25%	14%
85 and over	3%	2%
Race		
White	50%	42%
African American	44%	54%
Asian	0%	<1%
Other	6%	3%
Hispanic, Latino or Spanish Origin?		
Yes	8%	5%
No	92%	95%
Income		
Under \$10,000	7%	7%
\$10,000-\$14,999	6%	6%
\$15,000-\$24,999	13%	12%
\$25,000-\$34,999	16%	9%
\$35,000-\$49,999	10%	15%
\$50,000-\$74,999	20%	20%
\$75,000-\$99,999	12%	12%
\$100,000-\$149,999	10%	13%
\$150,000-\$199,999	3%	4%
\$200,000 or more	3%	2%
Full-time student	3%	n/a
Other	n/a	n/a

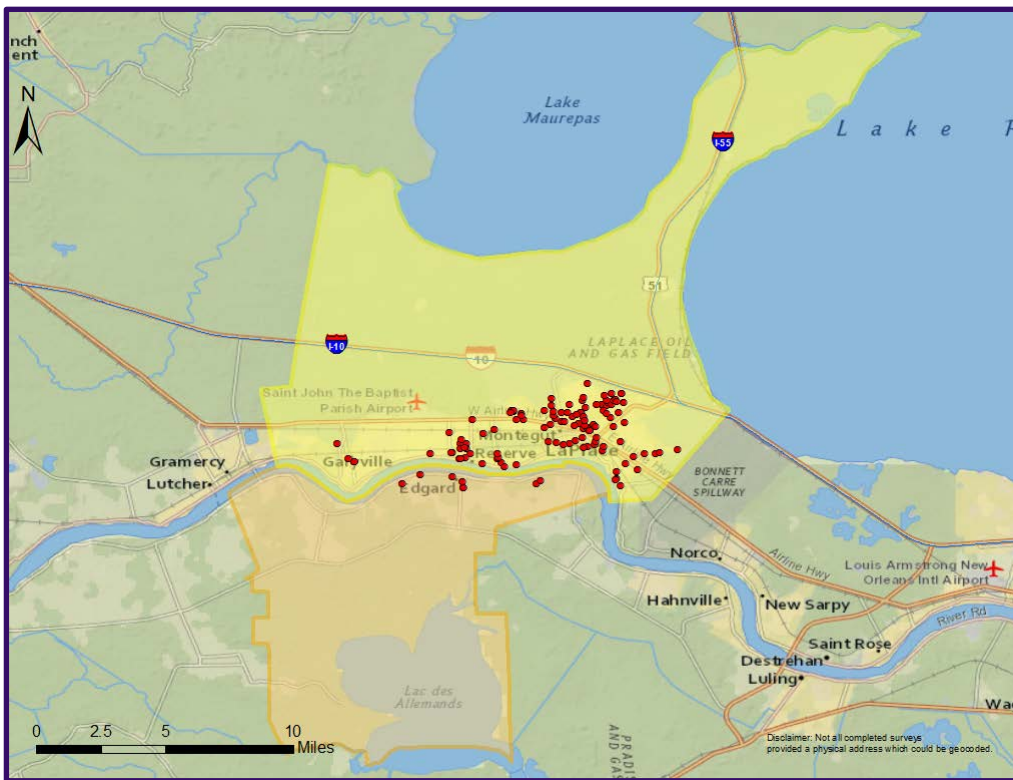
Demographic	Total Sample	Census Data (St. John)
	N = 159	44,161
Highest Level of Education		
Less than 9th grade	2%	5%
9th to 12th grade, but did not graduate	9%	12%
High school diploma	19%	38%
Some college or vocational school, but not degree	30%	22%
A 2-year college degree	15%	6%
A 4-year college degree	19%	12%
Graduate or professional degree	6%	5%
Employment Status		
Employed full-time (35 hours + per week)	40%	n/a
Employed part-time (Less than 35 hours per week)	5%	n/a
Unemployed	5%	9%
Retired	28%	n/a
Stay at home caregiver	10%	n/a
Full-time student	3%	n/a
Other	10%	n/a
Housing Type		
One unit structure	84%	81%
Two-or-more-unit structure	4%	10%
Mobile homes and other	9%	9%
Housing Tenure		
Owner	85%	79%
Renter	15%	21%

Behavioral Analysis Summary for St. John Parish During Hurricane Events

Survey Respondents by Location



Survey Respondents by Zip Codes



Survey Respondents by Evacuation Phase