

St. James Parish

Total Population by Evacuation Phase

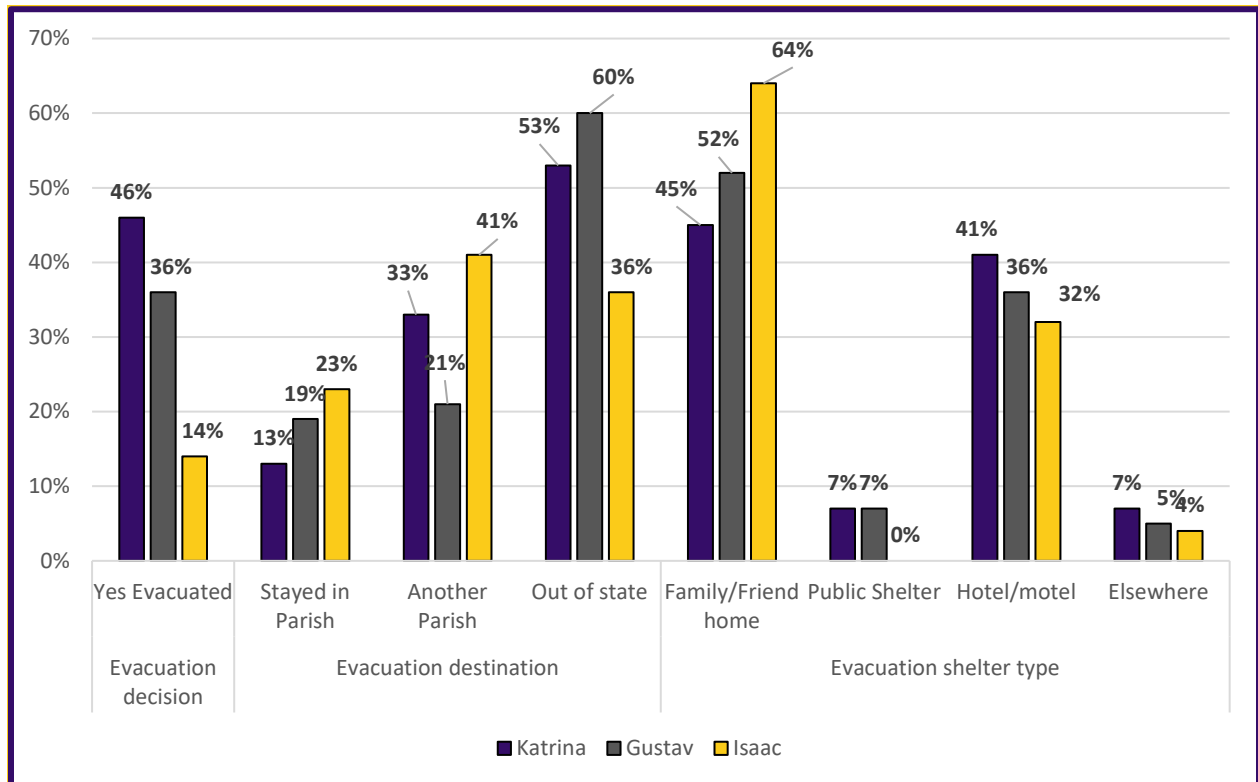
Parish	Phase 1 Evacuation	Phase 2 Evacuation	Phase 3 Evacuation	Total Population
St. James	N/A	8,569	13,081	21,650
		40%	60%	

Total population by Evacuation Phase in St. James Parish

Previous Evacuation Behavior

Survey Question	Previous Disaster Experience in Current Home	
During the time you've lived in this home, have any of the following hazards affected you, your home or the people who live with you?	Flooding from rain	12%
	Flooding from river, canal, or lake	7%
	Flooding from storm surge or wave action	3%
	Any type of flooding	16%
	Wind damage	58%
	No previous damage at current home	36%

Previous experience with flooding and wind damage in current homes.

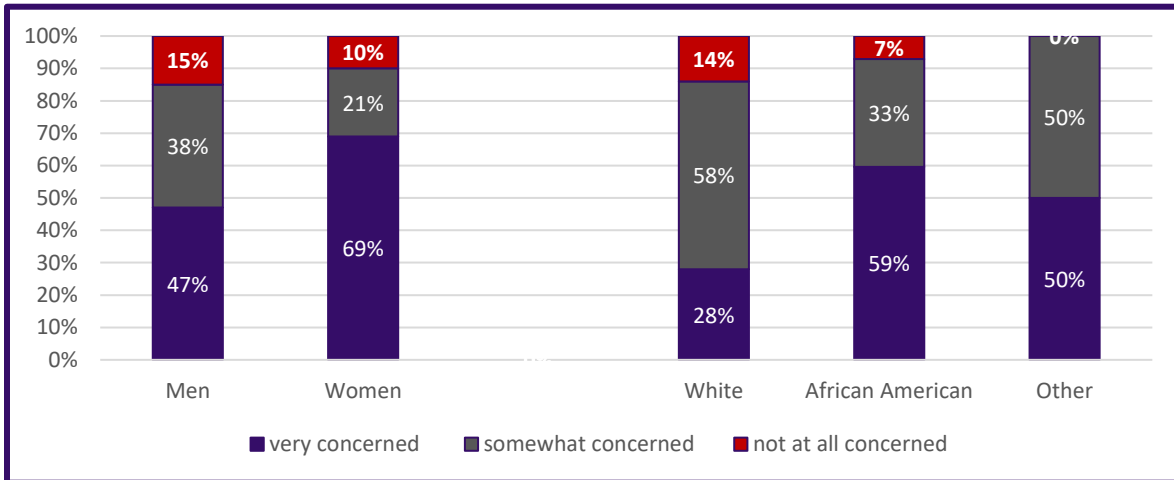


Evacuation decisions, destination, and shelter type during Hurricanes Katrina, Gustav and Isaac.

Behavioral Analysis Summary for St. James Parish During Hurricane Events

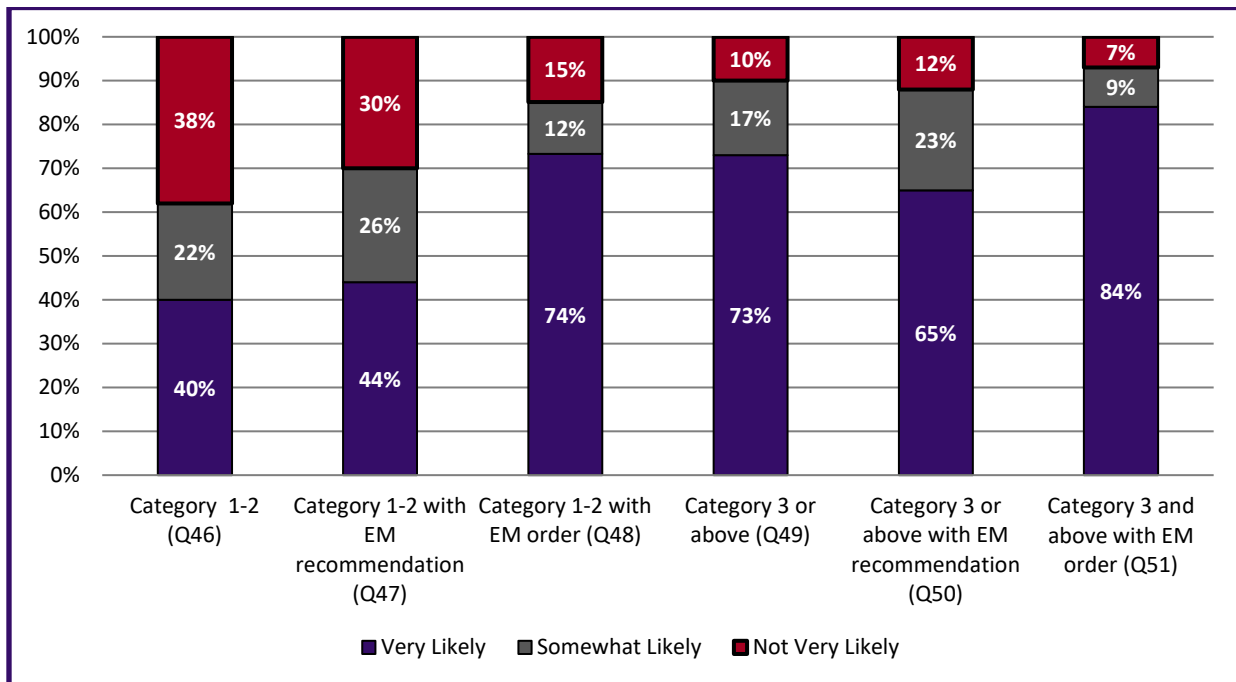
Risk perception of hurricanes and their effects.

Threat	Very Concerned	Somewhat Concerned	Not at all Concerned
Threat of Hurricane	42%	47%	10%
Flooding of Home	13%	38%	49%
Damage from Winds	30%	57%	14%



The variation in perceived threat of a hurricane impacting people varies among demographic data.

Evacuation Intentions



Behavioral Analysis Summary for St. James Parish During Hurricane Events

Overall evacuation intentions for St. James Parish

Most likely destination for if Evacuation for a Category 3 or Greater					
Category	Family/Friend	Public shelter	Hotel/Motel	Someplace else	Don't know
Overall by Percentage	49%	2%	43%	4%	1%
Overall by People (Assumes 93% Evacuate)*	9,882	494	8,647	865	247
Responses by Demographics					
White	47%	1%	44%	7%	1%
African American	52%	4%	41%	1%	1%
Other	75%	0%	25%	0%	0%

Most likely destinations during evacuation from a Category 3 or Greater Storm

Category	Yes, will take private vehicle (Q65)	If Yes, Would ride with someone	If Yes – Will take 1 vehicle	If Yes – Will take 2 vehicles	If Yes – Will take 3 or more vehicles	If Yes, will take boat or trailer
Overall	99%	3%	51%	32%	15%	27%
By Households*	3,750	234	3,750	2,344	1,078	1,954
By # of Vehicles*	N/A	N/A	19,808	21,046	13,463	N/A
<i>Total Private Vehicles Evacuating the St. James Parish</i>		11,672	<i>Total Private and Trailers Evacuating St. James Parish</i>			13,626

How people will evacuate and with how many vehicles, boats, or trailers

* Percentage of people/households who said they are “very likely” or “somewhat likely” to evacuate with a Mandatory Evacuation Order for a Category 3 or stronger hurricane.

Most Common Roads Identified as Evacuation Routes	
I-10	82%
I-55	19%
HWY 61	14%
LA 1	13%
I-12	9%

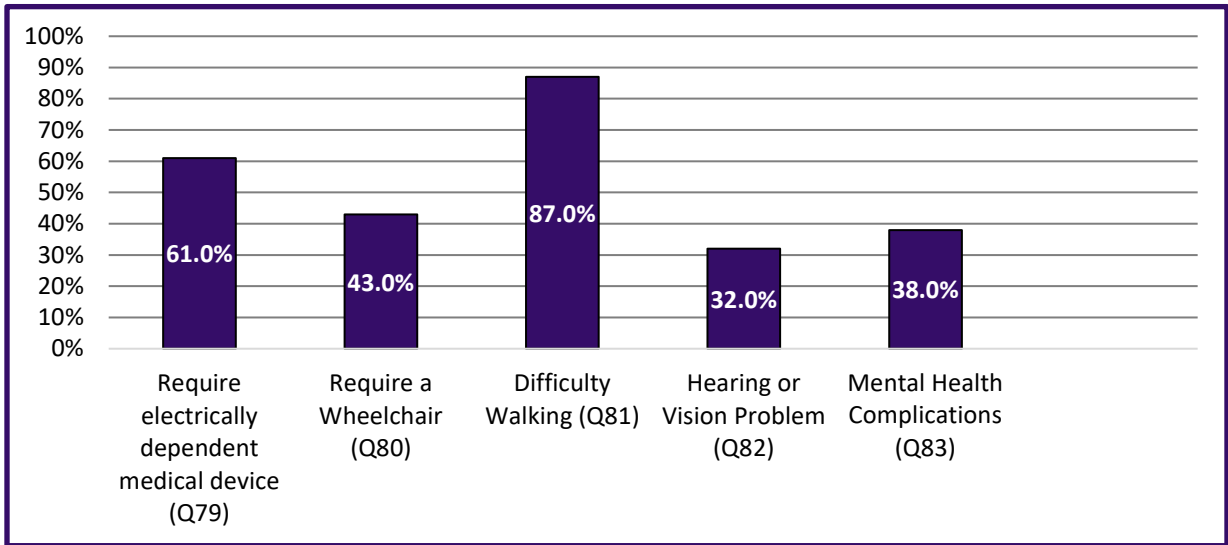
Most Likely Destination States	
Texas	31%
Louisiana	14%
Arkansas	9%
Tennessee	6%
Mississippi	4%
Other	10%
Don't Know	26%

Most Likely Destination Cities	
Houston	7%
Dallas	6%
Atlanta	6%
Memphis	3%
Baton Rouge	2%

Most likely destinations and route to be used by evacuees from St. James Parish

Behavioral Analysis Summary for St. James Parish During Hurricane Events

Access and Functional Needs



Types of medical needs and disabilities identified through the survey for Region 3 (Sample = 19).

Information Sources

Survey Question	Identified Information Sources	
<i>If a hurricane threatens your area, where would you get MOST of your information as you make your evacuation decision?</i>	The Internet	13%
	Radio	24%
	Television	63%
	Cellphone	12%
	Friends or Relatives	3%
	Local First Responders	1%
	Local Government	7%
	Other	2%

Where respondents receive their information during hurricane events (Sources include multiple responses by many participants).

Behavioral Analysis Summary for St. James Parish During Hurricane Events

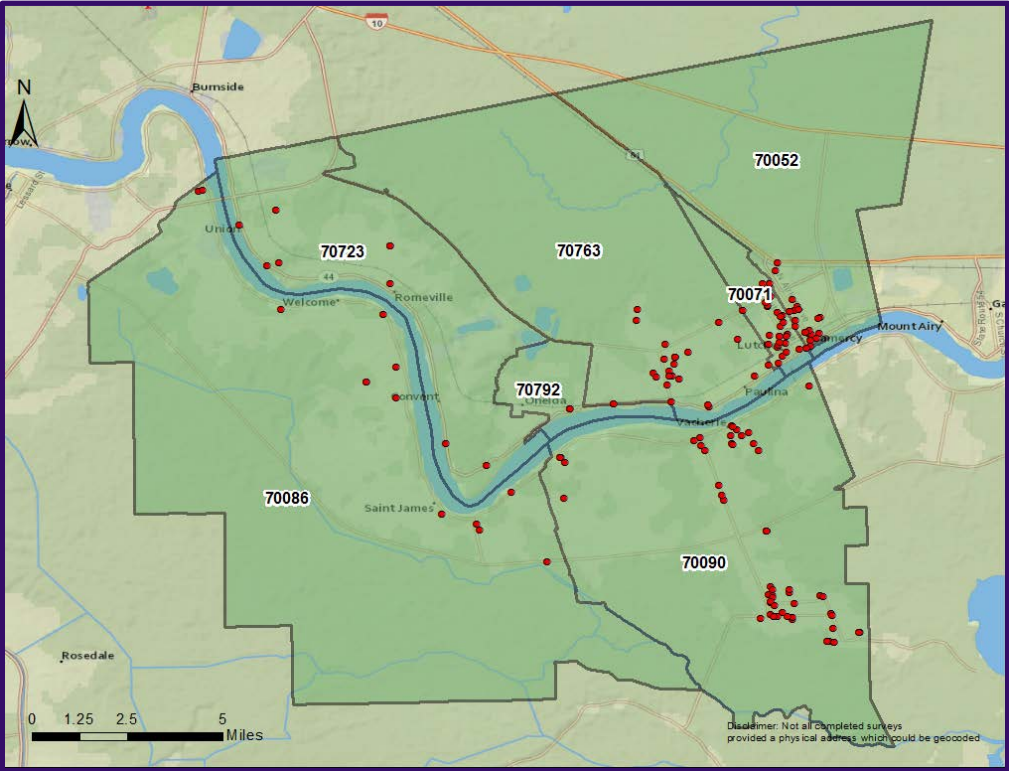
Survey Respondents Demographics

Demographic	Total Sample	Census Data (St. James)
	N = 163	44,161
Gender		
Male	38%	48%
Female	62%	52%
Age		
18-24	8%	12%
25-44	25%	31%
45-64	47%	38%
65-84	18%	18%
85 and over	3%	2%
Race		
White	54%	49%
African American	43%	50%
Asian	0%	0%
Other	2.5%	1%
Hispanic, Latino or Spanish Origin?		
Yes	8%	2%
No	92%	98%
Income		
Under \$10,000	7%	8%
\$10,000-\$14,999	4%	6%
\$15,000-\$24,999	8%	12%
\$25,000-\$34,999	11%	11%
\$35,000-\$49,999	19%	12%
\$50,000-\$74,999	15%	19%
\$75,000-\$99,999	14%	11%
\$100,000-\$149,999	14%	13%
\$150,000-\$199,999	8%	5%
\$200,000 or more	2%	2%
Full-time student	3%	n/a
Other	n/a	n/a

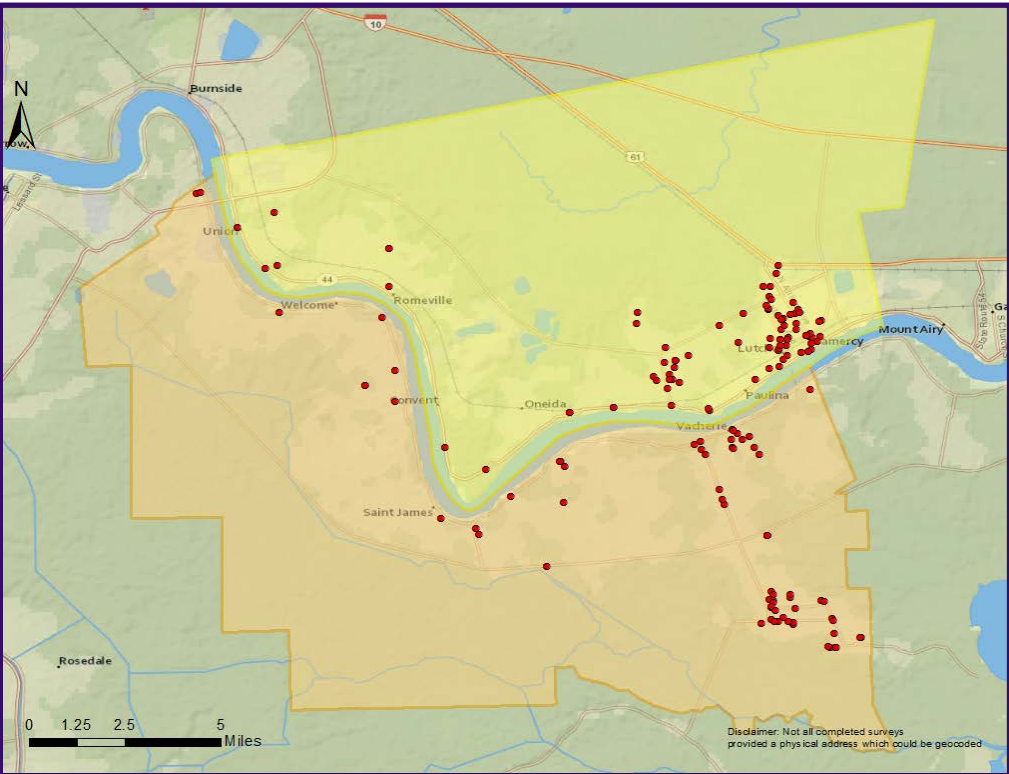
Demographic	Total Sample	Census Data (St. James)
	N = 163	44,161
Highest Level of Education		
Less than 9th grade	0%	4%
9th to 12th grade, but did not graduate	6%	12%
High school diploma	27%	45%
Some college or vocational school, but not degree	26%	18%
A 2-year college degree	15%	7%
A 4-year college degree	16%	10%
Graduate or professional degree	10%	4%
Employment Status		
Employed full-time (35 hours + per week)	46%	n/a
Employed part-time (Less than 35 hours per week)	5%	n/a
Unemployed	4%	11%
Retired	32%	n/a
Stay at home caregiver	4%	n/a
Full-time student	3%	n/a
Other	6%	n/a
Housing Type		
One unit structure	74%	77%
Two-or-more-unit structure	7%	6%
Mobile homes and other	15%	17%
Housing Tenure		
Owner	89%	84%
Renter	11%	16%

Behavioral Analysis Summary for St. James Parish During Hurricane Events

Survey Respondents by Location



Survey Respondents by Zip Codes



Survey Respondents by Evacuation Phase