

## Lafourche Parish

### Total Population by Evacuation Phase

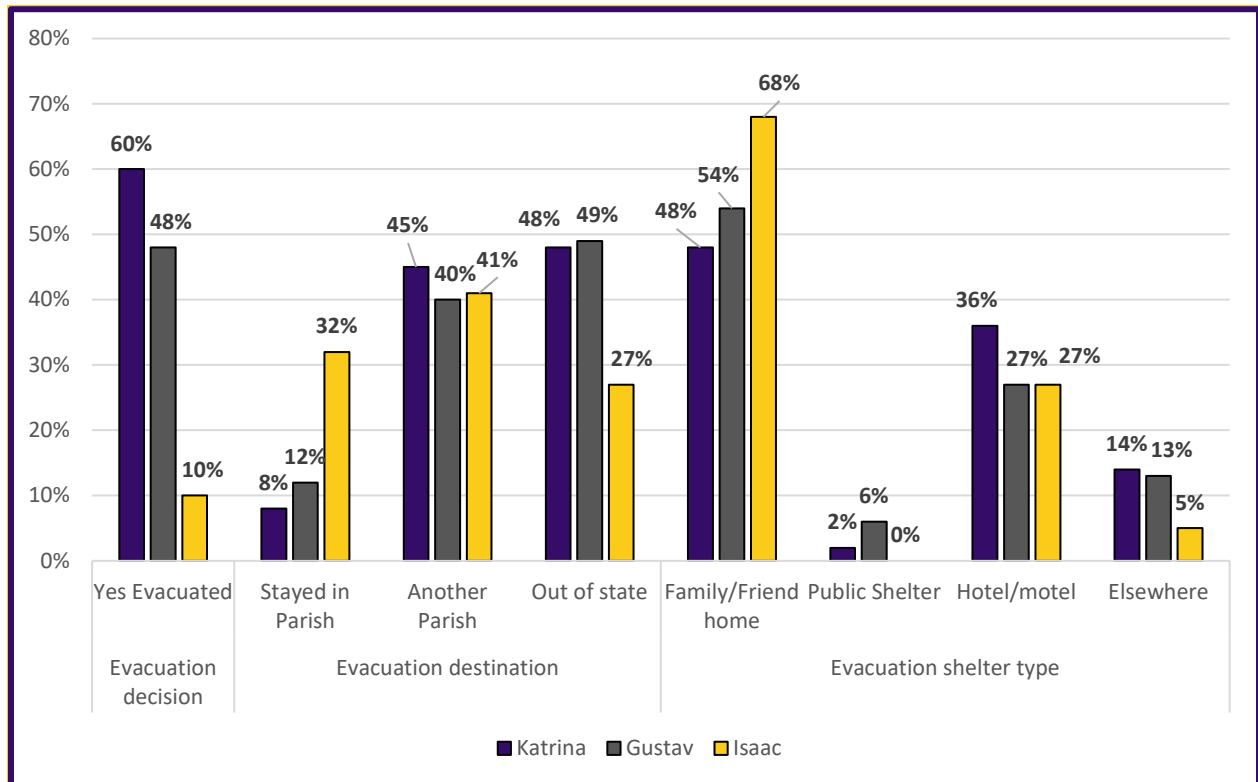
Parish	Phase 1 Evacuation	Phase 2 Evacuation	Phase 3 Evacuation	Total Population
Lafourche	23,394	74,080	N/A	97,474
	24.0%	76.0%		

Total population by Evacuation Phase in Lafourche Parish

### Previous Evacuation Behavior

Survey Question	Previous Disaster Experience in Current Home	
<b>During the time you've lived in this home, have any of the following hazards affected you, your home or the people who live with you?</b>	Flooding from rain	10%
	Flooding from river, canal, or lake	3%
	Flooding from storm surge or wave action	3%
	Any type of flooding	12%
	Wind damage	40%
	No previous damage at current home	54%

Previous experience with flooding and wind damage in current homes.

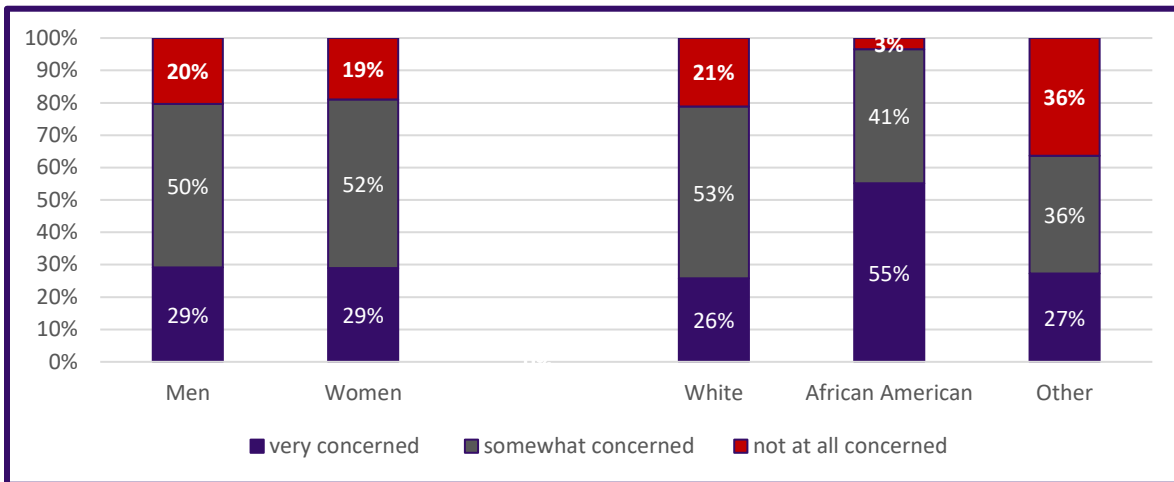


Evacuation decisions, destination, and shelter type during Hurricanes Katrina, Gustav and Isaac.

## Behavioral Analysis Summary for Lafourche Parish During Hurricane Events

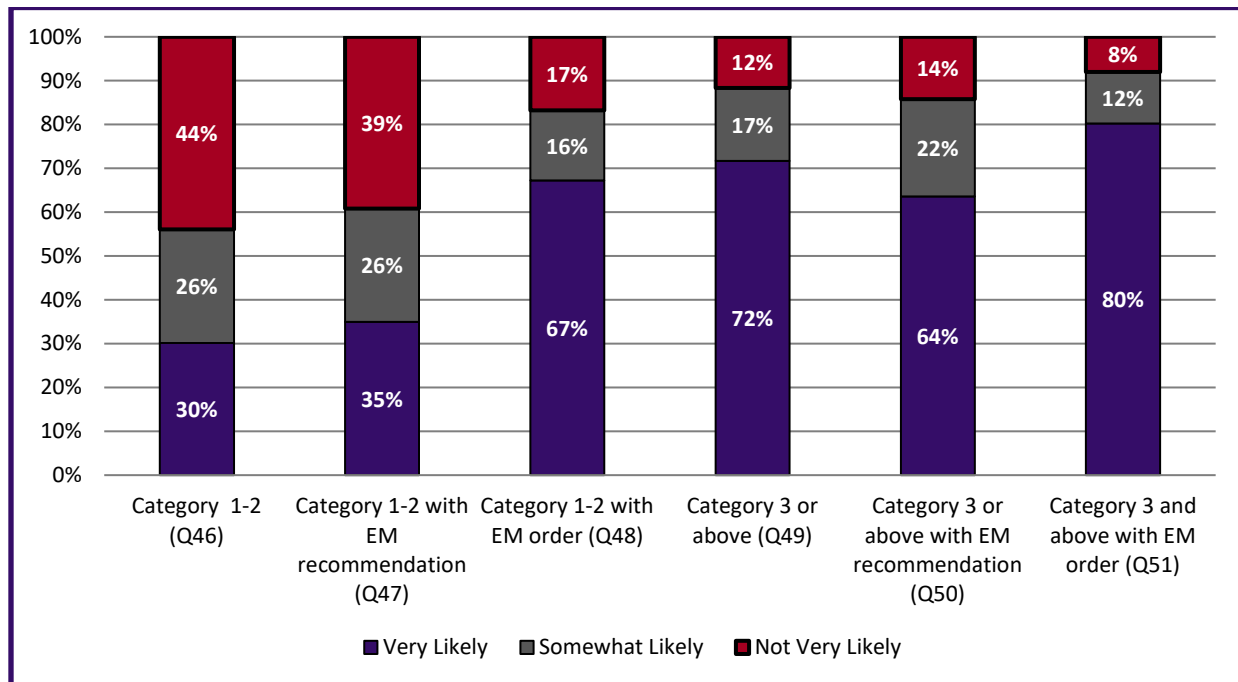
### Risk perception of hurricanes and their effects.

Threat	Very Concerned	Somewhat Concerned	Not at all Concerned
Threat of Hurricane	30%	51%	19%
Flooding of Home	13%	34%	53%
Damage from Winds	24%	54%	22%



*The variation in perceived threat of a hurricane impacting people varies among demographic data.*

### Evacuation Intentions



## Behavioral Analysis Summary for Lafourche Parish During Hurricane Events

### Overall evacuation intentions for Lafourche Parish

Most likely destination for if Evacuation for a Category 3 or Greater					
Category	Family/Friend	Public shelter	Hotel/Motel	Someplace else	Don't know
Overall by Percentage	47%	4%	34%	11%	4%
Overall by People (Assumes 92% Evacuate)*	45,488	4,061	33,304	10,966	3,655
Responses by Demographics					
White	47%	2%	35%	12%	4%
African American	45%	17%	31%	7%	0%
Other	55%	9%	18%	9%	9%

*Most likely destinations during evacuation from a Category 3 or Greater Storm*

Category	Yes, will take private vehicle (Q65)	If Yes, Would ride with someone	If Yes – Will take 1 vehicle	If Yes – Will take 2 vehicles	If Yes – Will take 3 or more vehicles	If Yes, will take boat or trailer
Overall	96%	2%	56%	30%	13%	25%
By Households*	31,516	712	18,223	9,681	4,129	8,050
By # of Vehicles*	N/A	N/A	18,223	19,362	12,386	N/A
<i>Total Private Vehicles Evacuating the Lafourche Parish</i>		49,971	<i>Total Private and Trailers Evacuating Lafourche Parish</i>			58,021

*How people will evacuate and with how many vehicles, boats, or trailers*

\* Percentage of people/households who said they are “very likely” or “somewhat likely” to evacuate with a Mandatory Evacuation Order for a Category 3 or stronger hurricane.

Most Common Roads Identified as Evacuation Routes	
I-10	38%
HWY 90	34%
LA 1	25%
I-49	10%
I-59 and I-55	5%

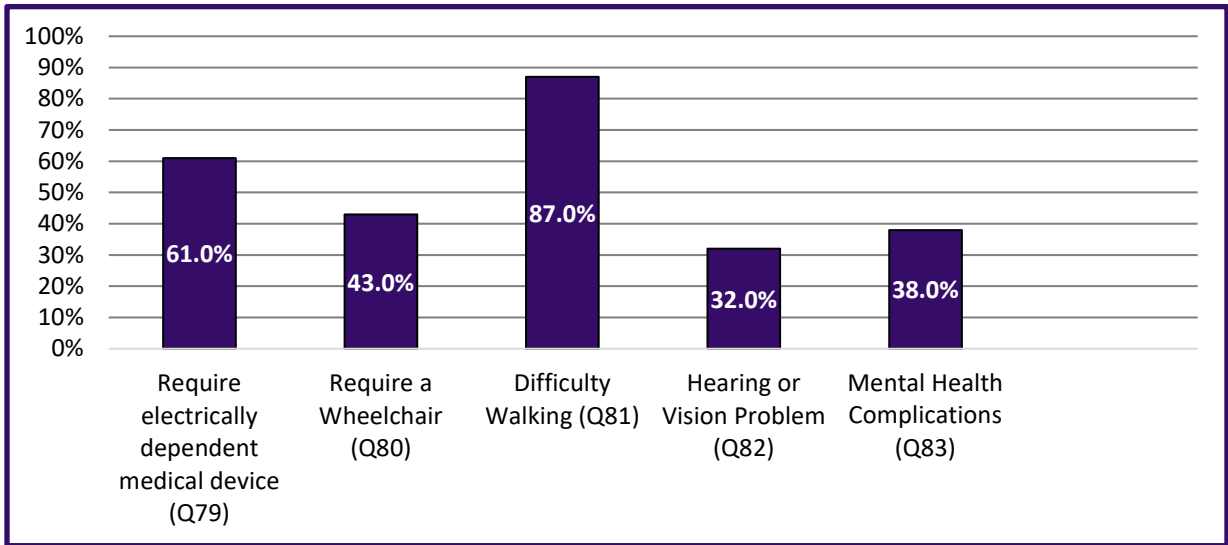
Most Likely Destination States	
Louisiana	22%
Texas	18%
Mississippi	12%
Arkansas	8%
Tennessee	7%
Other	10%
Don't Know	23%

Most Likely Destination Cities	
Houston	5%
Dallas	4%
Baton Rouge	3%
Shreveport	2%
Memphis	2%

*Most likely destinations and route to be used by evacuees from Lafourche Parish*

## Behavioral Analysis Summary for Lafourche Parish During Hurricane Events

### Access and Functional Needs



*Types of medical needs and disabilities identified through the survey for Region 3 (Sample = 19).*

### Information Sources

Survey Question	Identified Information Sources	
<b><i>If a hurricane threatens your area, where would you get MOST of your information as you make your evacuation decision?</i></b>	The Internet	18%
	Radio	25%
	Television	74%
	Cellphone	5%
	Friends or Relatives	4%
	Local First Responders	2%
	Local Government	5%
	Other	1%

*Where respondents receive their information during hurricane events (Sources include multiple responses by many participants).*

## Behavioral Analysis Summary for Lafourche Parish During Hurricane Events

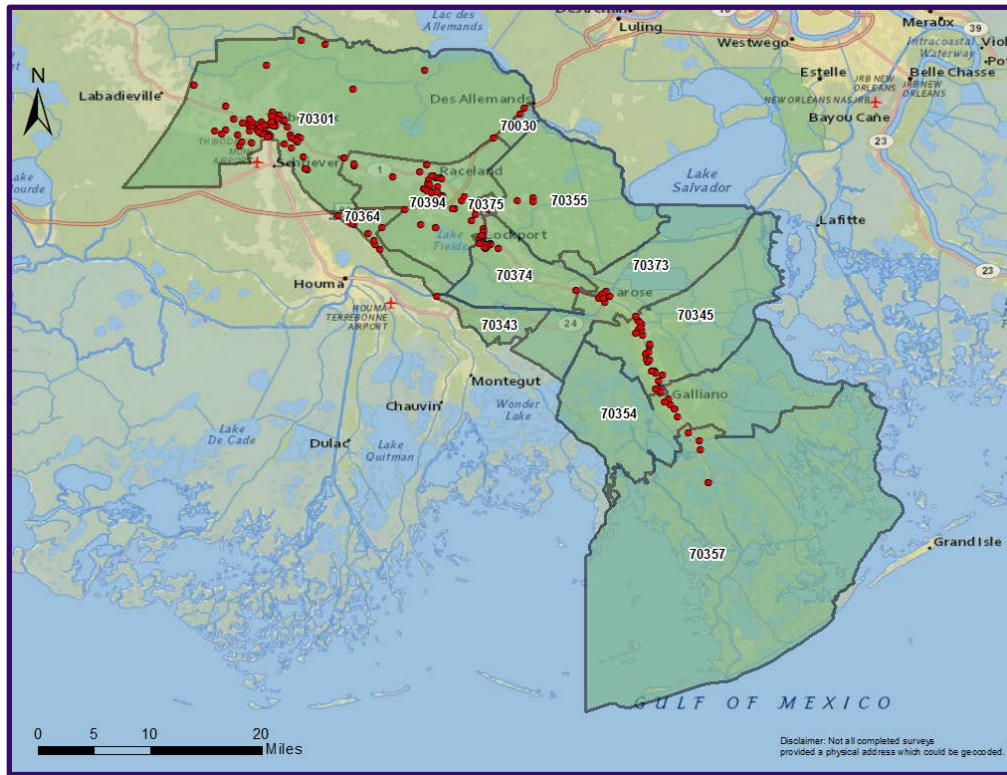
### Survey Respondents Demographics

Demographic	Total Sample	Census Data (Lafourche)
	<b>N = 240</b>	<b>97,474</b>
<b>Gender</b>		
Male	48%	49%
Female	52%	51%
<b>Age</b>		
18-24	7%	13%
25-44	29%	34%
45-64	45%	35%
65-84	17%	16%
85 and over	1%	2%
<b>Race</b>		
White	83%	80%
African American	12%	13%
Asian	0%	1%
Other	5%	6%
<b>Hispanic, Latino or Spanish Origin?</b>		
Yes	5%	4%
No	95%	95%
<b>Income</b>		
Under \$10,000	6%	7%
\$10,000-\$14,999	2%	7%
\$15,000-\$24,999	9%	11%
\$25,000-\$34,999	15%	12%
\$35,000-\$49,999	15%	12%
\$50,000-\$74,999	16%	18%
\$75,000-\$99,999	1%	13%
\$100,000-\$149,999	19%	13%
\$150,000-\$199,999	5%	4%
\$200,000 or more	2%	3%
Full-time student	4%	n/a
Other	n/a	n/a

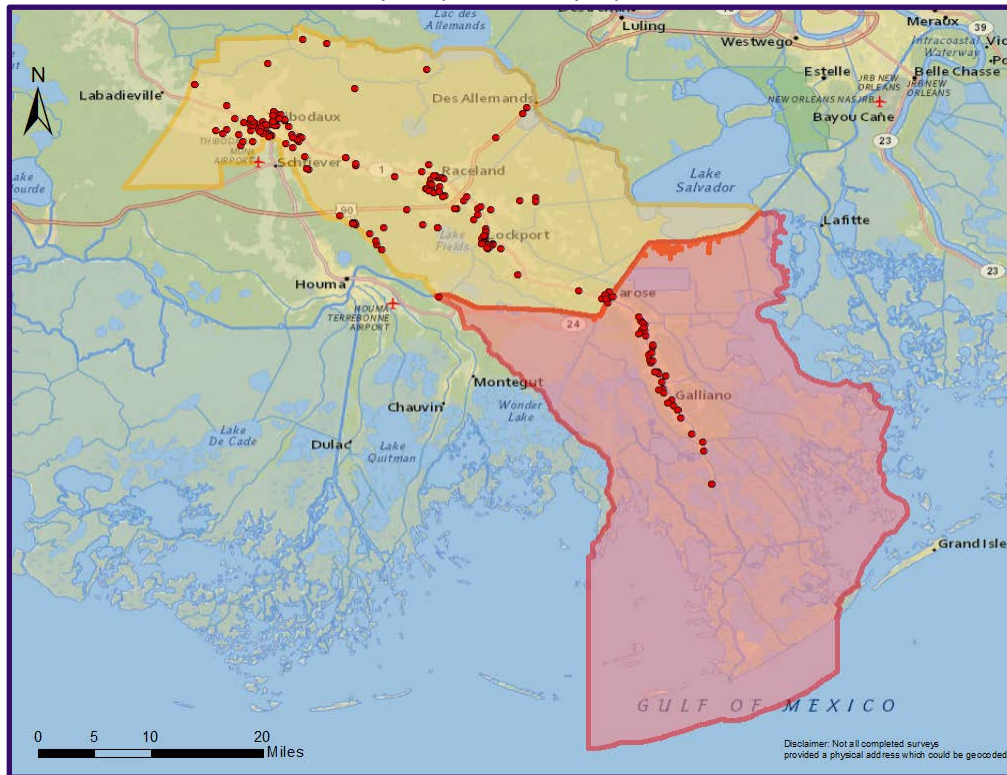
Demographic	Total Sample	Census Data (Study Area)
	<b>N = 240</b>	<b>97,474</b>
<b>Highest Level of Education</b>		
Less than 9th grade	3%	11%
9th to 12th grade, but did not graduate	6%	14%
High school diploma	28%	39%
Some college or vocational school, but not degree	23%	15%
A 2-year college degree	11%	5%
A 4-year college degree	19%	10%
Graduate or professional degree	10%	5%
<b>Employment Status</b>		
Employed full-time (35 hours + per week)	52%	n/a
Employed part-time (Less than 35 hours per week)	6%	n/a
Unemployed	6%	7%
Retired	19.9%	n/a
Stay at home caregiver	7%	n/a
Full-time student	4%	n/a
Other	6%	n/a
<b>Housing Type</b>		
One unit structure	82%	
Two-or-more-unit structure	6%	
Mobile homes and other	11%	
<b>Housing Tenure</b>		
Owner	86%	
Renter	14%	

# Behavioral Analysis Summary for Lafourche Parish During Hurricane Events

## Survey Respondents by Location



## Survey Respondents by Zip Codes



## Survey Respondents by Evacuation Phase