

Ascension Parish

Total Population by Evacuation Phase

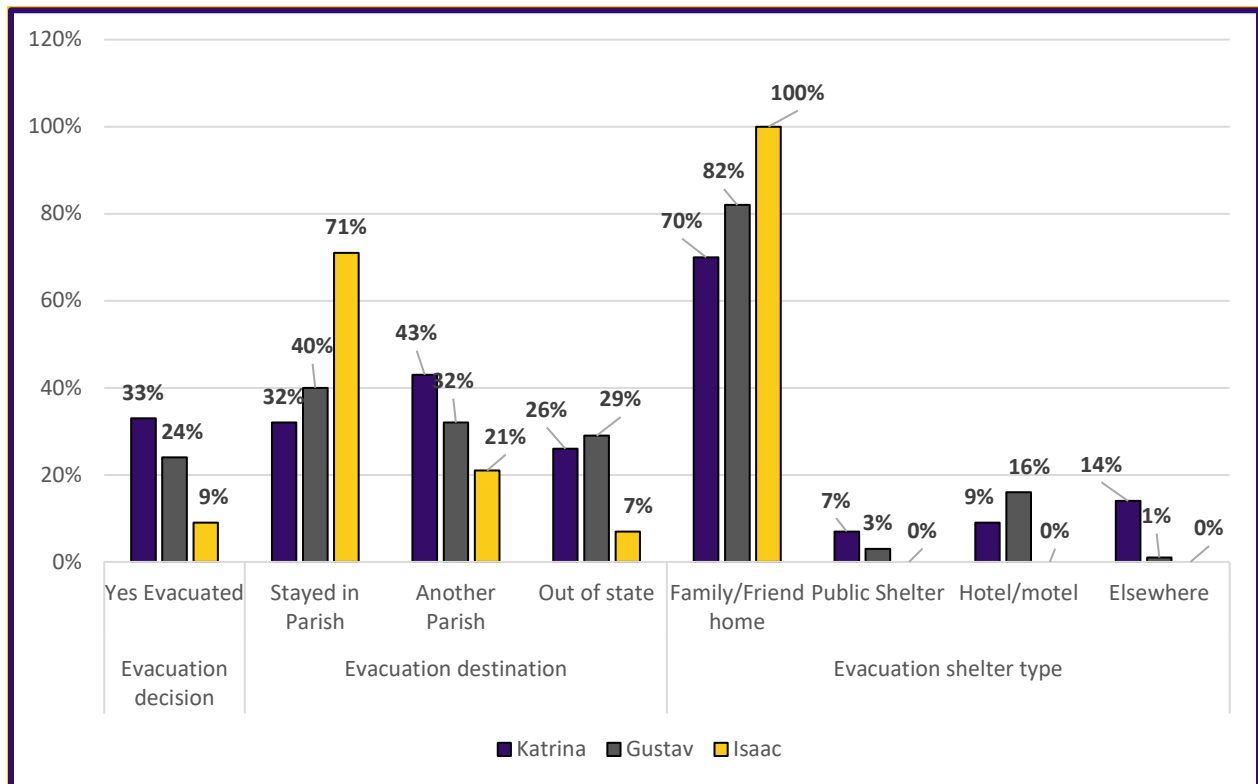
Parish	Phase 1 Evacuation	Phase 2 Evacuation	Phase 3 Evacuation	Total Population
Ascension	N/A	11,692	103,046	114,738
		10%	90%	

Total population by Evacuation Phase in Ascension Parish

Previous Evacuation Behavior

Survey Question	Previous Disaster Experience in Current Home	
During the time you've lived in this home, have any of the following hazards affected you, your home or the people who live with you?	Flooding from rain	25%
	Flooding from river, canal, or lake	19%
	Flooding from storm surge or wave action	4%
	Any type of flooding	33%
	Wind damage	33%
	No previous damage at current home	44%

Previous experience with flooding and wind damage in current homes.

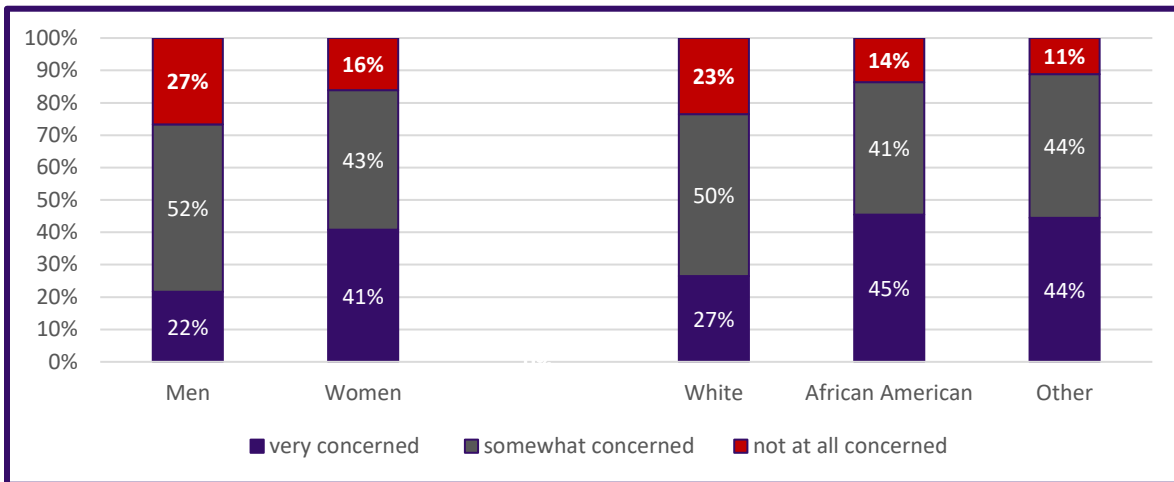


Evacuation decisions, destination, and shelter type during Hurricanes Katrina, Gustav and Isaac.

Behavioral Analysis Summary for Ascension Parish During Hurricane Events

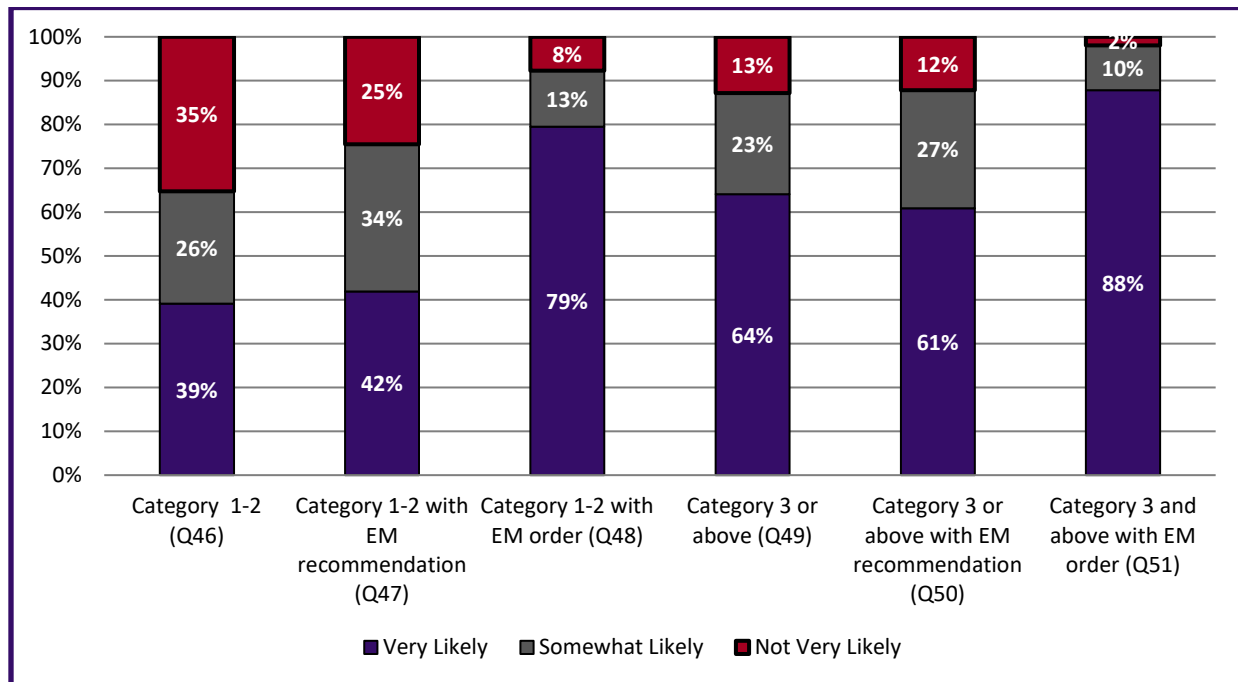
Risk perception of hurricanes and their effects.

Threat	Very Concerned	Somewhat Concerned	Not at all Concerned
Threat of Hurricane	33%	46%	21%
Flooding of Home	11%	33%	56%
Damage from Winds	33%	42%	25%



The variation in perceived threat of a hurricane impacting people varies among demographic data.

Evacuation Intentions



Behavioral Analysis Summary for Ascension Parish During Hurricane Events

Overall evacuation intentions for Ascension Parish

Most likely destination for if Evacuation for a Category 3 or Greater					
Category	Family/Friend	Public shelter	Hotel/Motel	Someplace else	Don't know
Overall by Percentage	62%	7%	23%	9%	4%
Overall by People (Assumes 98% Evacuate)*	69,253	8,191	25,318	9,681	4,468
Responses by Demographics					
White	65%	5%	16%	10%	3%
African American	44%	13%	33%	4%	4%
Other	56%	0%	33%	11%	0%

Most likely destinations during evacuation from a Category 3 or Greater Storm

Category	Yes, will take private vehicle (Q65)	If Yes, Would ride with someone	If Yes – Will take 1 vehicle	If Yes – Will take 2 vehicles	If Yes – Will take 3 or more vehicles	If Yes, will take boat or trailer
Overall	99%	3%	44%	32%	21%	13%
By Households*	38,807	1,028	17,470	12,589	8,221	5,007
By # of Vehicles*	N/A	N/A	17,470	25,178	24,664	N/A
<i>Total Private Vehicles Evacuating the Ascension Parish</i>		67,311	<i>Total Private and Trailers Evacuating Ascension Parish</i>			72,319

How people will evacuate and with how many vehicles, boats, or trailers

* Percentage of people/households who said they are “very likely” or “somewhat likely” to evacuate with a Mandatory Evacuation Order for a Category 3 or stronger hurricane.

Most Common Roads Identified as Evacuation Routes	
I-10	54%
HWY 61	17%
LA 1	14%
I-55	12%
I-12	9%

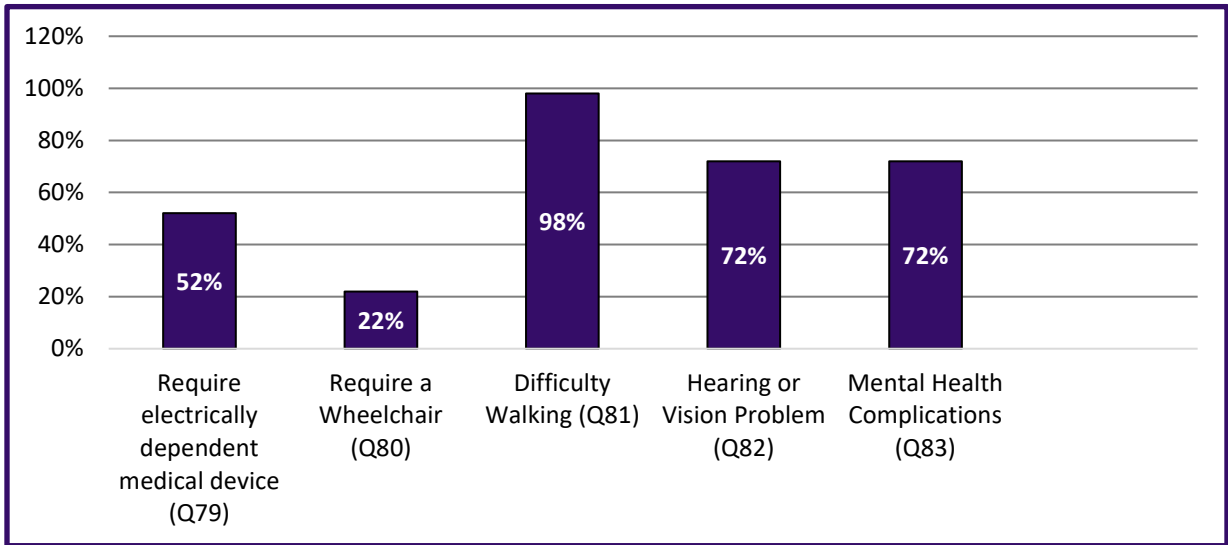
Most Likely Destination States	
Texas	28%
Louisiana	25%
Arkansas	8%
Mississippi	6%
Tennessee	5%
Other	12%
Don't Know	15%

Most Likely Destination Cities	
Houston	12%
Dallas	3%
Shreveport	3%
Memphis	3%
Atlanta	2%

Most likely destinations and route to be used by evacuees from Ascension Parish

Behavioral Analysis Summary for Ascension Parish During Hurricane Events

Access and Functional Needs



Types of medical needs and disabilities identified through the survey for Region 2 (Sample = 9).

Information Sources

Survey Question	Identified Information Sources	
<i>If a hurricane threatens your area, where would you get MOST of your information as you make your evacuation decision?</i>	The Internet	17%
	Radio	22%
	Television	61%
	Cellphone	13%
	Friends or Relatives	2%
	Local First Responders	2%
	Local Government	4%
	Other	1%

Where respondents receive their information during hurricane events (Sources include multiple responses by many participants).

Behavioral Analysis Summary for Ascension Parish During Hurricane Events

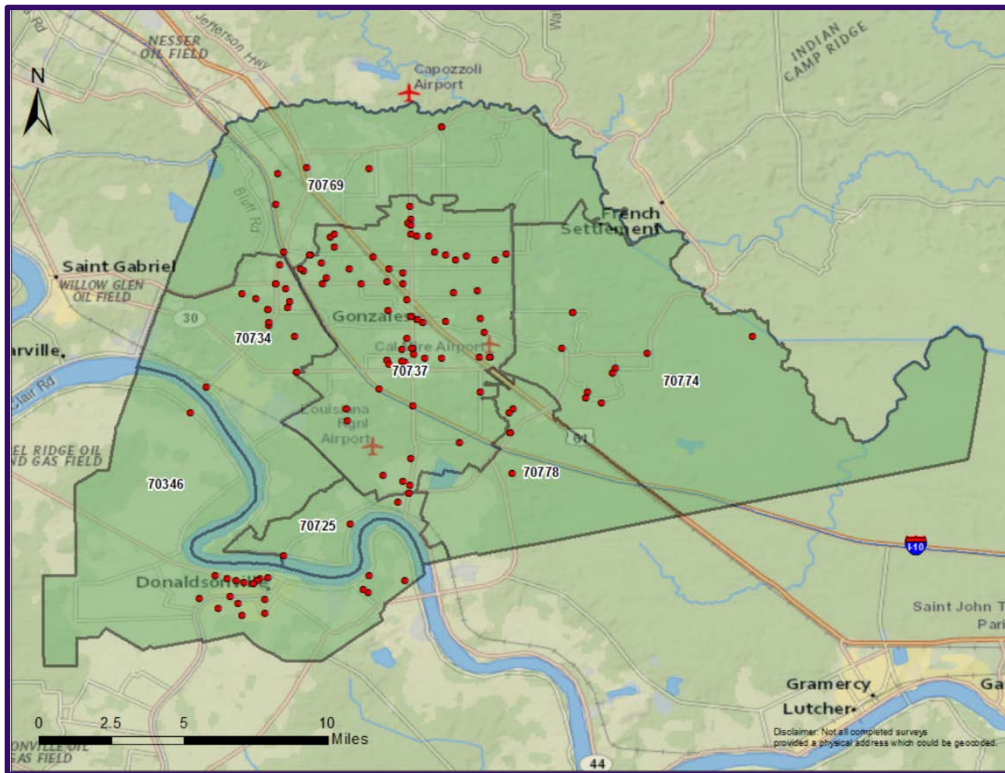
Survey Respondents Demographics

Demographic	Total Sample	Census Data (Ascension)
	N = 162	114,738
Gender		
Male	39%	50%
Female	61%	50%
Age		
18-24	9%	11%
25-44	22%	40%
45-64	41%	35%
65-84	26%	13%
85 and over	1%	1%
Race		
White	65%	74%
African American	30%	22%
Asian	1%	1%
Other	6%	3%
Hispanic, Latino or Spanish Origin?		
Yes	1%	5%
No	99%	95%
Income		
Under \$10,000	5%	5%
\$10,000-\$14,999	3%	5%
\$15,000-\$24,999	10%	7%
\$25,000-\$34,999	11%	7%
\$35,000-\$49,999	12%	11%
\$50,000-\$74,999	14%	18%
\$75,000-\$99,999	19%	15%
\$100,000-\$149,999	15%	20%
\$150,000-\$199,999	9%	8%
\$200,000 or more	2%	4%
Full-time student	2%	n/a
Other	n/a	n/a

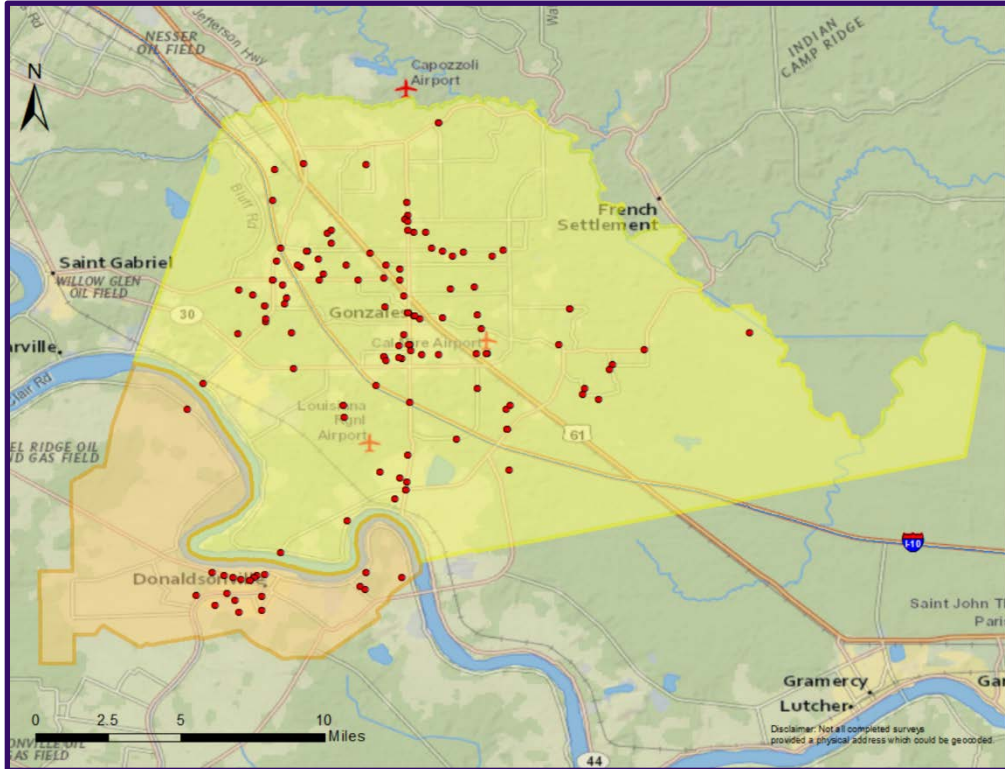
Demographic	Total Sample	Census Data (Ascension)
	N = 162	114,738
Highest Level of Education		
Less than 9th grade	1%	4%
9th to 12th grade, but did not graduate	6%	8%
High school diploma	25%	35%
Some college or vocational school, but not degree	30%	21%
A 2-year college degree	8%	7%
A 4-year college degree	21%	19%
Graduate or professional degree	10%	7%
Employment Status		
Employed full-time (35 hours + per week)	42%	n/a
Employed part-time (Less than 35 hours per week)	6%	n/a
Unemployed	6%	6%
Retired	34%	n/a
Stay at home caregiver	5%	n/a
Full-time student	1%	n/a
Other	6%	n/a
Housing Type		
One unit structure	72%	74%
Two-or-more-unit structure	5%	6%
Mobile homes and other	23%	20%
Housing Tenure		
Owner	89%	81%
Renter	11%	19%

Behavioral Analysis Summary for Ascension Parish During Hurricane Events

Survey Respondents by Location



Survey Respondents by Zip Codes



Survey Respondents by Evacuation Phase